



FOOTBALL TEAM CATALOGUE 2021

United Kingdom - English



MOVE TO ZERO

Helping protect the future of sport for all athletes*

Move to Zero is Nike's journey toward zero carbon and zero waste to help protect the future of sport. We exist to serve athletes everywhere and that's why we're on a mission to help ensure a healthy planet. For us, there is no finish line. Niketeamfootball.com will now display a sunburst logo next to products made with sustainable materials. Look for this logo to find products made with at least 50% sustainable materials by weight, exclusive of trims.

Sustainable materials include recycled polyester or organic cotton. Recycled polyester reduces carbon emissions and waste. Organic cotton is grown without synthetic fertilizers and with less water than conventional cotton.

For more information on Nike Sustainability please visit nike.com/sustainability or purpose.nike.com.



CONTENTS

Matchday	4
Training	70
Lifestyle	140
Equipment	162



MATCHDAY



NEW VaporKnit III Jersey

RRP £54.95

Lifecycle

January 2021 - December 2022

Futures only

Available in

S - M - L - XL - 2XL



CW3101-010
Black / Black /
Black / (White)



CW3101-100
White / White /
White / (Black)



CW3101-463
Royal Blue /
Royal Blue /
Obsidian /
(White)



CW3101-657
University Red /
Bright Crimson /
Bright Crimson /
(White)

Product Features

- This product is made with 100% recycled polyester fibers.
- Nike VaporKnit technology combines lightweight cooling, reduced cling and precision fit.
- Quick-drying, open-hole fabric helps you stay cool in high-heat zones.
- Stretchy, slim cut fits close to the body so it stays out of your way.
- Slim fit for a tailored feel.



NEW Strike II Jersey S/S

RRP £31.95

Lifecycle

January 2021 - December 2022

Available in

S - M - L - XL - 2XL



CW3544-010
Black / Black /
(White)



CW3544-011
Black / Volt /
(White)



CW3544-100
White / White /
(Black)



CW3544-410
Midnight Navy /
Photo Blue /
(White)



CW3544-463
Royal Blue /
Obsidian /
(White)



CW3544-657
University Red /
Bright Crimson /
(White)

Product Features

- This product is made with at least 75% recycled polyester fibers.
- Dri-FIT technology helps you stay dry and comfortable.
- Mesh on the back and sides provides additional breathability.
- Side panels are shaped like a lightning bolt for a fast look.
- Slim fit for a tailored feel.



Matchday



 Sustainable materials

NEW Strike II Jersey S/S (Youth)

RRP £22.95

Lifecycle

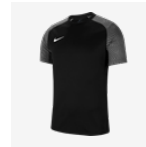
January 2021 - December 2022

Available in

XS - S - M - L
XL

RRP £22.95

RRP £26.95



CW3557-010
Black / Black /
(White)



CW3557-011
Black / Volt /
(White)



CW3557-100
White / White /
(Black)



CW3557-410
Midnight Navy /
Photo Blue /
(White)



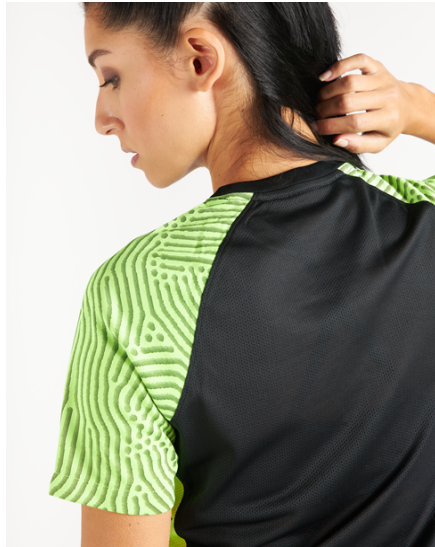
CW3557-463
Royal Blue /
Obsidian /
(White)



CW3557-657
University Red /
Bright Crimson /
(White)

Product Features

- This product is made with at least 75% recycled polyester fibers.
- Dri-FIT technology helps you stay dry and comfortable.
- Mesh on the back and sides provides additional breathability.
- Side panels are shaped like a lightning bolt for a fast look.
- Standard fit for a relaxed, easy feel.



Women's Strike II Jersey S/S

RRP £31.95

Lifecycle

January 2021 - December 2022

Available in

XS - S - M - L - XL



CW3553-010
Black / Black /
(White)



CW3553-011
Black / Volt /
(White)



CW3553-100
White / White /
(Black)



CW3553-410
Midnight Navy /
Photo Blue /
(White)



CW3553-463
Royal Blue /
Obsidian /
(White)



CW3553-657
University Red /
Bright Crimson /
(White)

Product Features

- This product is made with at least 75% recycled polyester fibers.
- Dri-FIT technology helps you stay dry and comfortable.
- Mesh on the back and sides provides additional breathability.
- Side panels are shaped like a lightning bolt for a fast look.
- Standard fit for a relaxed, easy feel.



Sustainable materials



Challenge III Jersey S/S

RRP £31.95

Lifecycle

January 2020 - December 2021

Available in

S - M - L - XL - 2XL



BV6703-010
Black / (White)



BV6703-100
White / (Black)



BV6703-302
Pine Green /
(White)



BV6703-463
Royal Blue /
(White)



BV6703-657
University Red /
(White)

Product Features

- 100% Polyester.
- Dri-FIT technology helps keep you dry and comfortable.
- Slim fit for a tailored feel.
- Ribbed collar and cuffs deliver a retro look and feel.



Challenge III Jersey S/S (Youth)

RRP £22.95

Lifecycle

January 2020 - December 2021

Available in

XS - S - M - L
XL

RRP £22.95

RRP £26.95



BV6738-010
Black / Black /
(White)



BV6738-100
White / White /
(Black)



BV6738-302
Pine Green /
Pine Green /
(White)



BV6738-463
Royal Blue /
Royal Blue /
(White)



BV6738-657
University Red /
University Red /
(White)

Product Features

- 100% Polyester.
- Dri-FIT technology helps keep you dry and comfortable.
- Slim fit for a tailored feel.
- Ribbed collar and cuffs deliver a retro look and feel.



 Sustainable materials

NEW Striped Division IV Jersey L/S (Youth)

RRP £17.95

Lifecycle

January 2021 - December 2023

Available in

XS - S - M - L
XL

RRP £17.95

RRP £20.95



CW3825-060
Anthracite /
Black / (White)



CW3825-100
White / Black /
(Black)



CW3825-102
White / Royal
Blue / (Black)



CW3825-103
White /
University Blue /
(Black)



CW3825-104
White /
University Red /
(Black)



CW3825-302
Pine Green /
Black / (White)



CW3825-463
Royal Blue /
Black / (White)



CW3825-658
University Red /
Black / (White)



CW3825-719
Tour Yellow /
Black / (White)

Product Features

- This product is made with 100% recycled polyester fibers.
- Nike Dri-FIT technology moves sweat from your skin for quicker evaporation—helping you stay dry and comfortable.
- Lightweight mesh on the back adds breathability.
- Standard fit for a relaxed, easy feel.



NEW Striped Division IV Jersey S/S

RRP £21.95

Lifecycle

January 2021 - December 2023

Available in

S - M - L - XL - 2XL



CW3813-060
Anthracite /
Black / (White)



CW3813-100
White / Black /
(Black)



CW3813-102
White / Royal
Blue / (Black)



CW3813-103
White /
University Blue /
(Black)



CW3813-104
White /
University Red /
(Black)



CW3813-302
Pine Green /
Black / (White)



CW3813-463
Royal Blue /
Black / (White)



CW3813-658
University Red /
Black / (White)



CW3813-719
Tour Yellow /
Black / (White)

Product Features

- This product is made with 100% recycled polyester fibers.
- Nike Dri-FIT technology moves sweat from your skin for quicker evaporation—helping you stay dry and comfortable.
- Lightweight mesh on the back adds breathability.
- Slim fit for a tailored feel.



 Sustainable materials

NEW Striped Division IV Jersey S/S (Youth)

RRP £16.95

Lifecycle

January 2021 - December 2023

Available in

XS - S - M - L
XL

RRP £16.95

RRP £19.95



CW3819-060
Anthracite /
Black / (White)



CW3819-100
White / Black /
(Black)



CW3819-102
White / Royal
Blue / (Black)



CW3819-103
White /
University Blue /
(Black)



CW3819-104
White /
University Red /
(Black)



CW3819-302
Pine Green /
Black / (White)



CW3819-463
Royal Blue /
Black / (White)



CW3819-658
University Red /
Black / (White)



CW3819-719
Tour Yellow /
Black / (White)

Product Features

- This product is made with 100% recycled polyester fibers.
- Nike Dri-FIT technology moves sweat from your skin for quicker evaporation—helping you stay dry and comfortable.
- Lightweight mesh on the back adds breathability.
- Standard fit for a relaxed, easy feel.



NEW Women's Striped Division IV Jersey S/S

RRP £21.95

Lifecycle

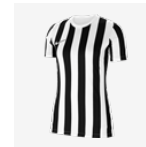
January 2021 - December 2023

Available in

XS - S - M - L - XL



CW3816-060
Anthracite /
Black / (White)



CW3816-100
White / Black /
(Black)



CW3816-102
White / Royal
Blue / (Black)



CW3816-103
White /
University Blue /
(Black)



CW3816-104
White /
University Red /
(Black)



CW3816-302
Pine Green /
Black / (White)



CW3816-463
Royal Blue /
Black / (White)



CW3816-658
University Red /
Black / (White)



CW3816-719
Tour Yellow /
Black / (White)

Product Features

- This product is made with 100% recycled polyester fibers.
- Nike Dri-FIT technology moves sweat from your skin for quicker evaporation—helping you stay dry and comfortable.
- Lightweight mesh on the back adds breathability.
- Standard fit for a relaxed, easy feel.



Trophy IV Jersey S/S

RRP £19.95

Lifecycle

January 2020 - December 2022

Available in

S - M - L - XL - 2XL



BV6725-010
Black / White /
(White)



BV6725-053
Pewter Grey /
Bright Crimson /
(Black)



BV6725-100
White / Black /
(Black)



BV6725-303
Pine Green /
Gorge Green /
(White)



BV6725-354
Hyper Turq / Volt
/ (Black)



BV6725-410
Midnight Navy /
Photo Blue /
(White)



BV6725-412
University Blue /
Midnight Navy /
(White)



BV6725-463
Royal Blue /
Midnight Navy /
(White)



BV6725-657
University Red /
Team Red /
(White)



BV6725-719
Tour Yellow /
University Gold /
(Black)



BV6725-819
Safety Orange /
Team Orange /
(Black)

Product Features

- This product is made with at least 50% recycled polyester fibers.
- Dri-FIT technology helps keep you dry and comfortable.
- Mesh side stripes and back panel add breathability.
- Slim fit for a tailored feel.



 Sustainable materials

Trophy IV Jersey S/S (Youth)

RRP £14.95

Lifecycle

January 2020 - December 2022

Available in

XS - S - M - L
XL

RRP £14.95

RRP £16.95

BV6749-010
Black / White /
(White)BV6749-052
Pewter Grey /
Bright Crimson /
(Black)BV6749-100
White / Black /
(Black)BV6749-302
Pine Green /
Gorge Green /
(White)BV6749-354
Hyper Turq / Volt
/ (Black)BV6749-410
Midnight Navy /
Photo Blue /
(White)BV6749-412
University Blue /
Midnight Navy /
(White)BV6749-483
Royal Blue /
Midnight Navy /
(White)BV6749-657
University Red /
Team Red /
(White)BV6749-719
Tour Yellow /
University Gold /
(Black)BV6749-819
Safety Orange /
Team Orange /
(Black)

Product Features

- This product is made with at least 50% recycled polyester fibers.
- Dri-FIT technology helps keep you dry and comfortable.
- Mesh side stripes and back panel add breathability.
- Slim fit for a tailored feel.



Tiempo Premier Jersey L/S

RRP £18.95

Lifecycle

January 2018 - December 2021

Available in

S - M - L - XL - 2XL



894248-010
Black / White /
(White)



894248-057
Pewter Grey /
Black / (Black)



894248-100
White / Black /
(Black)



894248-302
Pine Green /
White / (White)



894248-410
Midnight Navy /
University Red /
(White)



894248-411
Midnight Navy /
White / (White)



894248-412
University Blue /
White / (White)



894248-463
Royal Blue /
White / (White)



894248-464
Royal Blue /
University Gold /
(White)



894248-657
University Red /
White / (White)



894248-662
Vivid Pink /
Black / (Black)



894248-739
University Gold /
Black / (Black)



894248-815
Safety Orange /
Black / (Black)

Product Features

- 100% Polyester.
- Nike Dry fabric helps you stay dry and comfortable.
- Front panel graphic is embossed for subtle style.
- Mesh back panel provides additional breathability.
- Ribbed v-neck collar provides a versatile fit.



Tiempo Premier Jersey L/S (Youth)

RRP £14.95

Lifecycle

January 2018 - December 2021

Available in

XS - S - M - L
XL

RRP £14.95

RRP £16.95



894113-010
Black / White /
(White)



894113-057
Pewter Grey /
Black / (Black)



894113-100
White / Black /
(Black)



894113-302
Pine Green /
White / (White)



894113-410
Midnight Navy /
University Red /
(White)



894113-411
Midnight Navy /
White / (White)



894113-412
University Blue /
White / (White)



894113-463
Royal Blue /
White / (White)



894113-464
Royal Blue /
University Gold /
(White)



894113-657
University Red /
White / (White)



894113-662
Vivid Pink /
Black / (Black)



894113-739
University Gold /
Black / (Black)



894113-815
Safety Orange /
Black / (Black)

Product Features

- 100% Polyester.
- Dri-FIT technology helps you stay dry and comfortable.
- Front panel graphic is embossed for subtle style.



Tiempo Premier Jersey S/S

RRP £16.95

Lifecycle

January 2018 - December 2021

Available in

S - M - L - XL - 2XL



894230-010
Black / White /
(White)



894230-057
Pewter Grey /
Black / (Black)



894230-100
White / Black /
(Black)



894230-302
Pine Green /
White / (White)



894230-410
Midnight Navy /
University Red /
(White)



894230-411
Midnight Navy /
White / (White)



894230-412
University Blue /
White / (White)



894230-463
Royal Blue /
White / (White)



894230-464
Royal Blue /
University Gold /
(White)



894230-657
University Red /
White / (White)



894230-662
Vivid Pink /
Black / (Black)



894230-739
University Gold /
Black / (Black)



894230-815
Safety Orange /
Black / (Black)

Product Features

- 100% Polyester.
- Dri-FIT technology helps you stay dry and comfortable.
- Front panel graphic is embossed for subtle style.
- Mesh back panel provides additional breathability.
- Ribbed v-neck collar provides a versatile fit.



Tiempo Premier Jersey S/S (Youth)

RRP £12.95

Lifecycle

January 2018 - December 2021

Available in

XS - S - M - L
XL

RRP £12.95

RRP £14.95



894111-010
Black / White /
(White)



894111-057
Pewter Grey /
Black / (Black)



894111-100
White / Black /
(Black)



894111-302
Pine Green /
White / (White)



894111-410
Midnight Navy /
University Red /
(White)



894111-411
Midnight Navy /
White / (White)



894111-412
University Blue /
White / (White)



894111-463
Royal Blue /
White / (White)



894111-464
Royal Blue /
University Gold /
(White)



894111-657
University Red /
White / (White)



894111-662
Vivid Pink /
Black / (Black)



894111-739
University Gold /
Black / (Black)



894111-815
Safety Orange /
Black / (Black)

Product Features

- 100% Polyester.
- Dri-FIT technology helps you stay dry and comfortable.
- Front panel graphic is embossed for subtle style.



Legend Jersey S/S

RRP £19.95

Lifecycle

January 2019 - December 2021

Available in

S - M - L - XL - 2XL



AJ0998-010
Black / White /
White / (White)



AJ0998-100
White / Black /
Black / (Black)



AJ0998-101
White /
University Red /
Black / (Black)



AJ0998-102
White / Royal
Blue / Black /
(Black)



AJ0998-302
Pine Green /
Action Green /
(White)



AJ0998-410
Midnight Navy /
White / White /
(White)



AJ0998-411
Midnight Navy /
Royal Blue /
Royal Blue /
(White)



AJ0998-463
Royal Blue /
White / White /
(White)



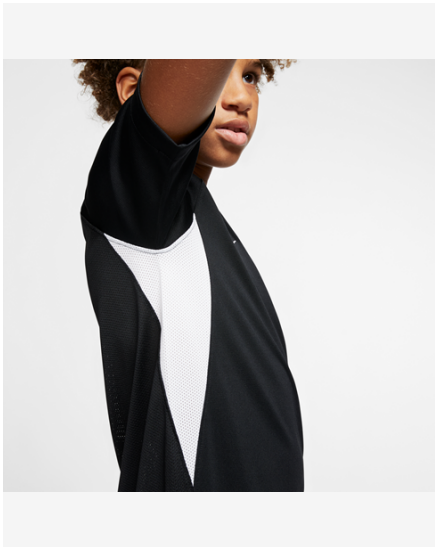
AJ0998-657
University Red /
White / White /
(White)



AJ0998-739
University Gold /
Black / Black /
(Black)

Product Features

- This product is made with at least 75% recycled polyester fibers.
- Dri-FIT technology helps you stay dry, comfortable and focused.
- Mesh underarm and shoulder insets add breathability.
- Hybrid v-neck collar has taped seams for a smooth feel.
- Swoosh design trademark is embroidered on the right chest.



Legend Jersey S/S (Youth)

RRP £14.95

Lifecycle

January 2019 - December 2021

Available in

XS - S - M - L
XL

RRP £14.95

RRP £16.95



AJ1010-010
Black / White /
Black / (White)



AJ1010-100
White / Black /
White / (Black)



AJ1010-101
White /
University Red /
University Red /
(Black)



AJ1010-102
White / Royal
Blue / Royal Blue
/ (White)



AJ1010-302
Pine Green /
White / White /
(White)



AJ1010-410
Midnight Navy /
White / White /
(White)



AJ1010-411
Midnight Navy /
Royal Blue /
Royal Blue /
(White)



AJ1010-463
Royal Blue /
White / White /
(White)



AJ1010-657
University Red /
White / White /
(White)



AJ1010-739
University Gold /
Black / Black /
(Black)

Product Features

- This product is made with at least 75% recycled polyester fibers.
- Dri-FIT technology helps you stay dry, comfortable and focused.
- Mesh underarm and shoulder insets add breathability.
- Hybrid v-neck collar has taped seams for a smooth feel.
- Swoosh design trademark is embroidered on the right chest.





Park VII Jersey L/S

RRP £15.95

Lifecycle

January 2020 - December 2023

Available in

S - M - L - XL - 2XL



BV6706-010
Black / (White)



BV6706-100
White / (Black)



BV6706-302
Pine Green /
(White)



BV6706-410
Midnight Navy /
(White)



BV6706-412
University Blue /
(White)



BV6706-463
Royal Blue /
(White)



BV6706-657
University Red /
(White)



BV6706-677
Team Red /
(White)



BV6706-702
Volt / (Black)



BV6706-719
Tour Yellow /
(Black)



BV6706-819
Safety Orange /
(Black)

Product Features

- This product is made with at least 75% recycled polyester fibers.
- Dri-FIT technology helps keep you dry and comfortable.
- Mesh back panel adds breathability.
- Slim fit for a tailored feel.



 Sustainable materials

Park VII Jersey L/S (Youth)

RRP £11.95

Lifecycle

January 2020 - December 2023

Available in

XS - S - M - L
XL

RRP £11.95

RRP £13.95



BV6740-010
Black / (White)



BV6740-100
White / (Black)



BV6740-302
Pine Green /
(White)



BV6740-410
Midnight Navy /
(White)



BV6740-412
University Blue /
(White)



BV6740-463
Royal Blue /
(White)



BV6740-657
University Red /
(White)



BV6740-677
Team Red /
(White)



BV6740-702
Volt / (Black)



BV6740-719
Tour Yellow /
(Black)



BV6740-819
Safety Orange /
(Black)

Product Features

- This product is made with 100% recycled polyester fibers.
- Dri-FIT technology helps keep you dry and comfortable.
- Mesh back panel adds breathability.
- Slim fit for a tailored feel.



NEW Park Derby III Jersey S/S

RRP £17.95

Lifecycle

January 2021 - December 2023

Available in

S - M - L - XL - 2XL



CW3826-010
Black / Jersey
Gold / (White)



CW3826-303
Pine Green /
Tour Yellow /
(White)



CW3826-410
Midnight Navy /
Tour Yellow /
(White)



CW3826-464
Royal Blue /
University Red /
(White)



CW3826-547
Court Purple /
White / (White)



CW3826-658
University Red /
Midnight Navy /
(White)



CW3826-677
Team Red /
University Blue /
(White)



CW3826-720
Tour Yellow /
Royal Blue /
(White)

Product Features

- This product is made with 100% recycled polyester fibers.
- Dri-FIT technology helps you stay dry and comfortable.
- V-neck collar is taped for a smooth feel against the skin.
- Mesh on the back and sides provides additional breathability.
- Slim fit for a tailored feel.



 Sustainable materials

NEW Park Derby III Jersey S/S (Youth)

RRP £13.95

Lifecycle

January 2021 - December 2023

Available in

XS - S - M - L
XL

RRP £13.95
RRP £15.95



CW3833-010
Black / Jersey
Gold / (White)



CW3833-303
Pine Green /
Tour Yellow /
(White)



CW3833-410
Midnight Navy /
Tour Yellow /
(White)



CW3833-464
Royal Blue /
University Red /
(White)



CW3833-547
Court Purple /
White / (White)



CW3833-658
University Red /
Midnight Navy /
(White)



CW3833-677
Team Red /
University Blue /
(White)



CW3833-720
Tour Yellow /
Royal Blue /
(White)

Product Features

- This product is made with 100% recycled polyester fibers.
- Dri-FIT technology helps you stay dry and comfortable.
- V-neck collar is taped for a smooth feel against the skin.
- Mesh on the back and sides provides additional breathability.
- Standard fit for a relaxed, easy feel.



Park VII Jersey S/S

RRP £14.95

Lifecycle

January 2020 - December 2023

Available in

S - M - L - XL - 2XL



BV6708-010
Black / (White)



BV6708-100
White / (Black)



BV6708-302
Pine Green /
(White)



BV6708-354
Hyper Turq /
(Black)



BV6708-410
Midnight Navy /
(White)



BV6708-412
University Blue /
(White)



BV6708-463
Royal Blue /
(White)



BV6708-547
Court Purple /
(White)



BV6708-635
Bright Crimson /
(Black)



BV6708-657
University Red /
(White)



BV6708-677
Team Red /
(White)



BV6708-702
Volt / (Black)



BV6708-719
Tour Yellow /
(Black)



BV6708-729
Jersey Gold /
(Black)



BV6708-819
Safety Orange /
(Black)

Product Features

- This product is made with at least 75% recycled polyester fibers.
- Dri-FIT technology helps keep you dry and comfortable.
- Mesh back panel adds breathability.
- Slim fit for a tailored feel.



 Sustainable materials

Park VII Jersey S/S (Youth)

RRP £10.95

Lifecycle

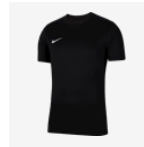
January 2020 - December 2023

Available in

XS - S - M - L
XL

RRP £10.95

RRP £12.95



BV6741-010
Black / (White)



BV6741-100
White / (Black)



BV6741-302
Pine Green /
(White)



BV6741-354
Hyper Turq /
(Black)



BV6741-410
Midnight Navy /
(White)



BV6741-412
University Blue /
(White)



BV6741-463
Royal Blue /
(White)



BV6741-547
Court Purple /
(White)



BV6741-635
Bright Crimson /
(Black)



BV6741-657
University Red /
(White)



BV6741-677
Team Red /
(White)



BV6741-702
Volt / (Black)



BV6741-719
Tour Yellow /
(Black)



BV6741-729
Jersey Gold /
(Black)



BV6741-819
Safety Orange /
(Black)

Product Features

- This product is made with at least 75% recycled polyester fibers.
- Dri-FIT technology helps keep you dry and comfortable.
- Mesh back panel adds breathability.
- Slim fit for a tailored feel.



Women's Park VII Jersey

RRP £14.95

Lifecycle

January 2020 - December 2023

Available in

XS - S - M - L - XL



BV6728-010
Black / (White)



BV6728-100
White / (Black)



BV6728-341
Pine Green /
(White)



BV6728-354
Hyper Turq /
(Black)



BV6728-410
Midnight Navy /
(White)



BV6728-412
University Blue /
(White)



BV6728-463
Royal Blue /
(White)



BV6728-547
Court Purple /
(White)



BV6728-657
University Red /
(White)



BV6728-719
Tour Yellow /
(Black)

Product Features

- This product is made with 100% recycled polyester fibers.
- Dri-FIT technology helps keep you dry and comfortable.
- Mesh on the back adds breathability.
- Slim fit for a tailored feel.



 Sustainable materials

VaporKnit III Short

RRP £44.95

Lifecycle

January 2021 - December 2023

Futures only

Available in

S - M - L - XL - 2XL



CW3847-010
Black / Black /
(White)



CW3847-100
White / White /
(Black)



CW3847-463
Royal Blue /
Obsidian /
(White)



CW3847-657
University Red /
Bright Crimson /
(White)

Product Features

- This product is made with 100% recycled polyester fibers.
- Nike VaporKnit technology combines lightweight cooling, reduced cling and precision fit.
- Flyvent waistband combines elastic and mesh for a breathable, snug feel.
- Open-hole fabric in high-heat zones helps you stay cool when the game heats up.
- Slim fit for a tailored feel.



NEW Venom III Woven Short

RRP £31.95

Lifecycle

January 2021 - December 2023

Available in

S - M - L - XL - 2XL



CW3855-010
Black / White /
(White)



CW3855-100
White / Black /
(Black)



CW3855-302
Pine Green /
White / (White)



CW3855-463
Royal Blue /
White / (White)



CW3855-657
University Red /
White / (White)

Product Features

- Body: 85% Polyester/15% Spandex. Mesh: 100% Polyester.
- Dri-FIT technology helps you stay dry and comfortable.
- Mesh on the back and inner legs helps keep you cool when the game heats up.
- Elastic waistband and hidden drawcord provide a personalized fit.
- Standard fit for a relaxed, easy feel.



Laser IV Woven Short

RRP £19.95

Lifecycle

January 2019 - December 2021

Available in

S - M - L - XL - 2XL



AJ1245-010
Black / (White)



AJ1245-100
White / (Black)



AJ1245-302
Pine Green /
(White)



AJ1245-410
Midnight Navy /
(White)



AJ1245-412
University Blue /
(White)



AJ1245-463
Royal Blue /
(White)



AJ1245-657
University Red /
(White)

Product Features

- 100% Polyester.
- Dri-FIT technology helps you stay dry, comfortable and focused.
- 4-way stretch fabric moves with you on the pitch.
- Mesh side stripes add breathability.
- Elastic waistband with flat drawcord provides a personalized fit.
- Hem vents help you move freely.
- Swoosh design trademark is embroidered on the left leg.



Laser IV Woven Short (Youth)

RRP £14.95

Lifecycle

January 2019 - December 2021

Available in

XS - S - M - L
XL

RRP £14.95

RRP £16.95



AJ1261-010
Black / (White)



AJ1261-100
White / (Black)



AJ1261-302
Pine Green /
(White)



AJ1261-410
Midnight Navy /
(White)



AJ1261-412
University Blue /
(White)



AJ1261-463
Royal Blue /
(White)



AJ1261-657
University Red /
(White)

Product Features

- 100% Polyester.
- Dri-FIT technology helps you stay dry, comfortable and focused.
- 4-way stretch fabric moves with you on the pitch.
- Mesh side stripes add breathability.
- Elastic waistband with flat drawcord provides a personalized fit.
- Hem vents help you move freely.
- Swoosh design trademark is embroidered on the left leg.



 Sustainable materials

NEW League II Knit Short

RRP £16.95

Lifecycle

January 2021 - December 2022

Available in

S - M - L - XL - 2XL



BV6852-010
Black / White /
White / (White)



BV6852-100
White / Black /
Black / (Black)



BV6852-302
Pine Green /
White / White /
(White)



BV6852-329
Green Spark /
Black / (Black)



BV6852-410
Midnight Navy /
White / (White)



BV6852-463
Royal Blue /
White / White /
(White)



BV6852-477
Team Royal /
White / (White)



BV6852-547
Court Purple /
White / White /
(White)



BV6852-657
University Red /
White / White /
(White)



BV6852-891
Team Orange /
Black / (Black)

Product Features

- This product is made with 100% recycled polyester fibers.
- Dri-FIT technology helps you stay dry, comfortable & focused.
- Mesh stripes on the lower legs add breathability.
- Slim fit for a tailored feel.
- Elastic waistband and drawcord.



 Sustainable materials

League II Knit Short (Youth)

RRP £12.95

Lifecycle

January 2020 - December 2022

Available in

XS - S - M - L
XL

RRP £12.95

RRP £14.95



BV6863-010
Black / White /
(White)



BV6863-100
White / Black /
(Black)



BV6863-302
Pine Green /
White / (White)



BV6863-329
Green Spark /
Black / (Black)



BV6863-410
Midnight Navy /
White / (White)



BV6863-463
Royal Blue /
White / (White)



BV6863-477
Team Royal /
White / (White)



BV6863-547
Court Purple /
White / (White)



BV6863-657
University Red /
White / (White)



BV6863-891
Team Orange /
Black / (Black)

Product Features

- This product is made with 100% recycled polyester fibers.
- Dri-FIT technology helps you stay dry, comfortable and focused.
- Mesh stripes on the lower legs add breathability.
- Slim fit for a tailored feel.
- Elastic waistband and drawcord.



NEW Park III Knit Short

RRP £11.95

Lifecycle

January 2020 - December 2023

Available in

S - M - L - XL - 2XL



BV6855-010
Black / (White)



BV6855-017
Pewter Grey /
(Black)



BV6855-100
White / (Black)



BV6855-302
Pine Green /
(White)



BV6855-354
Hyper Turq /
(Black)



BV6855-410
Midnight Navy /
(White)



BV6855-412
University Blue /
(White)



BV6855-463
Royal Blue /
(White)



BV6855-635
Bright Crimson /
(Black)



BV6855-657
University Red /
(White)



BV6855-677
Team Red /
(White)



BV6855-702
Volt / (Black)



BV6855-719
Tour Yellow /
(Black)



BV6855-739
University Gold /
(Black)



BV6855-819
Safety Orange /
(Black)

Product Features

- This product is made with 100% recycled polyester fibers.
- Dri-FIT technology helps you stay dry, comfortable and focused.
- Stretchy waistband is lined with mesh for breathability.
- Slim fit for a tailored feel.



 Sustainable materials

Park III Knit Short (Youth)

RRP £9.95

Lifecycle

January 2020 - December 2023

Available in

XS - S - M - L
XL

RRP £9.95
RRP £10.95



BV6865-010
Black / (White)



BV6865-017
Pewter Grey /
(Black)



BV6865-100
White / (Black)



BV6865-302
Pine Green /
(White)



BV6865-354
Hyper Turq /
(Black)



BV6865-410
Midnight Navy /
(White)



BV6865-412
University Blue /
(White)



BV6865-463
Royal Blue /
(White)



BV6865-635
Bright Crimson /
(Black)



BV6865-657
University Red /
(White)



BV6865-677
Team Red /
(White)



BV6865-702
Volt / (Black)



BV6865-719
Tour Yellow /
(Black)



BV6865-739
University Gold /
(Black)



BV6865-819
Safety Orange /
(Black)

Product Features

- This product is made with 100% recycled polyester fibers.
- Dri-FIT technology helps you stay dry, comfortable and focused.
- Stretchy waistband is lined with mesh for breathability.
- Slim fit for a tailored feel.



Women's Park III Knit Short

RRP £11.95

Lifecycle

January 2020 - December 2023

Available in

XS - S - M - L - XL



BV6860-010
Black / (White)



BV6860-100
White / (Black)



BV6860-410
Midnight Navy /
(White)



BV6860-412
University Blue /
(White)



BV6860-463
Royal Blue /
(White)



BV6860-657
University Red /
(White)



BV6860-677
Team Red /
(White)



BV6860-719
Tour Yellow /
(Black)

Product Features

- This product is made with 100% recycled polyester fibers.
- Dri-FIT technology helps you stay dry, comfortable and focused.
- Stretchy waistband is lined with mesh for breathability.
- Slim fit for a tailored feel.



Park Little Kids Set

RRP £22.95

Lifecycle

January 2020 - December 2023

Available in

XS - S - M - L - XL



CD2244-010
Black / Black /
(White)



CD2244-100
White / White /
(Black)



CD2244-302
Pine Green /
Pine Green /
(White)



CD2244-410
Midnight Navy /
Midnight Navy /
(White)



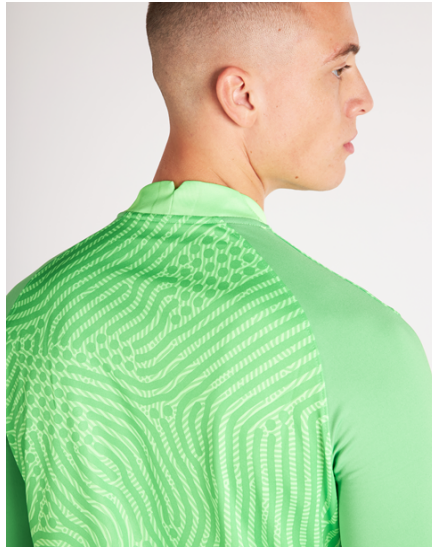
CD2244-463
Royal Blue /
Royal Blue /
(White)



CD2244-657
University Red /
Unvred / (White)

Product Features

- 100% Polyester.
- Dri-FIT technology helps keep you dry and comfortable.
- Mesh on the back of the jersey creates ventilation.
- Stretchy waistband on the shorts is lined with mesh for breathability.
- Standard fit for a relaxed, easy feel.



Gardien III GK Jersey L/S

RRP £57.95

Lifecycle

January 2020 - December 2021

Available in

S - M - L - XL - 2XL



BV6711-398
Green Spark /
Light Green
Spark / (Green
Spark)



BV6711-406
Team Royal /
Blue Spark /
(Team Royal)



BV6711-803
Team Orange /
Brilliant Orange /
(Team Orange)

Product Features

- This product is made with at least 50% recycled polyester fibers.
- Dri-FIT technology helps keep you dry, comfortable and focused.
- Flexible fabric on the sleeves give you the freedom to make every save.
- Slim fit for a tailored feel.
- Flexible fabric on the sleeves.



Sustainable materials



 Sustainable materials

Gardien III GK Jersey L/S (Youth)

RRP £45.95

Lifecycle

January 2020 - December 2021

Available in

XS - S - M - L
XL

RRP £45.95

RRP £54.95



BV6743-398
Green Spark /
Light Green
Spark / (Green
Spark)



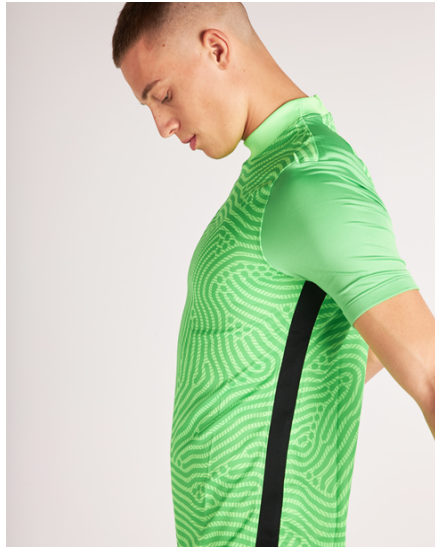
BV6743-477
Team Royal /
Blue Spark /
(Team Royal)



BV6743-891
Team Orange /
Brilliant Orange /
(Team Orange)

Product Features

- This product is made with 100% recycled polyester fibers.
- Dri-FIT technology helps keep you dry, comfortable and focused.
- Flexible fabric on the sleeves give you the freedom to make every save.
- Slim fit for a tailored feel.
- Flexible fabric on the sleeves.



Goalkeeper Gardien III Jersey S/S

RRP £54.95

Lifecycle

January 2020 - December 2021

Available in

S - M - L - XL - 2XL



BV6714-398
Green Strike /
Light Green
Spark / (Green
Spark)



BV6714-477
Team Royal /
Blue Spark /
(Team Royal)



BV6714-803
Team Orange /
Brilliant Orange /
(Team Orange)

Product Features

- This product is made with at least 50% recycled polyester fibers.
- Dri-FIT technology helps keep you dry, comfortable and focused.
- Flexible fabric on the sleeves give you the freedom to make every save.
- Slim fit for a tailored feel.



Padded Goalkeeper Tight

RRP £49.95

Lifecycle

April 2020 - December 2021

Available in

S - M - L - XL - 2XL



CV0045-010
Black / Black /
(White)

Product Features

- 80% Polyester/20% Spandex.
- Articulated padding on the hips provides flexible impact absorption.
- Dri-FIT technology helps keep you dry, comfortable and focused.



Padded Goalkeeper Tight (Youth)

RRP £33.95

Lifecycle

April 2020 - December 2021

Available in

XS - S - M - L
XL

RRP £33.95

RRP £39.95



CV0050-010
Black / Black /
(White)

Product Features

- 80% Polyester/20% Spandex.
- Articulated padding on the hips provides impact absorption.
- Dri-FIT technology helps keep you dry, comfortable and focused.



Padded Goalkeeper Short

RRP £39.95

Lifecycle

April 2020 - December 2021

Available in

S - M - L - XL - 2XL



CV0053-010
Black / Black /
(White)

Product Features

- 80% Polyester/20% Spandex.
- Articulated padding on the hips provides flexible impact absorption.
- Dri-FIT technology helps keep you dry, comfortable and focused.



Padded Goalkeeper Short (Youth)

RRP £29.95

Lifecycle

January 2020 - December 2021

Available in

XS - S - M - L
XL

RRP £29.95
RRP £34.95



CV0057-010
Black / Black /
(White)

Product Features

- 80% Polyester/20% Spandex.
- Articulated padding on the hips provides impact absorption.
- Dri-FIT technology helps keep you dry, comfortable and focused.



Park IV GK Jersey L/S

RRP £31.95

Lifecycle

January 2020 - December 2023

Available in

S - M - L - XL - 2XL



CJ6066-010
Black / White /
(White)



CJ6066-052
Pewter Grey /
White / (Black)



CJ6066-463
Royal Blue /
White / (White)



CJ6066-702
Volt / White /
(Black)



CJ6066-819
Safety Orange /
White / (Black)

Product Features

- 100% Polyester.
- Mesh across the back helps keep you cool when the game heats up.
- Dri-FIT technology helps keep you dry, comfortable and focused.
- Mesh across the back provides added breathability.
- Slim fit for a tailored feel.



Park IV GK Jersey L/S (Youth)

RRP £22.95

Lifecycle

January 2020 - December 2023

Available in

XS - S - M - L
XL

RRP £22.95

RRP £26.95



CJ6072-010
Black / White /
(White)



CJ6072-052
Pewter Grey /
White / (Black)



CJ6072-463
Royal Blue /
White / (White)



CJ6072-702
Volt / White /
(Black)



CJ6072-819
Safety Orange /
White / (Black)

Product Features

- 100% Polyester.
- Mesh across the back helps keep you cool when the game heats up.
- Dri-FIT technology helps keep you dry, comfortable and focused.
- Mesh across the back provides added breathability.
- Slim fit for a tailored feel.



Nike Dry Referee Top L/S

RRP £47.95

Lifecycle

June 2018 - March 2022

Available in

XS - S - M - L - XL - 2XL



AA0736-010
Black /
Anthracite /
(Anthracite)



AA0736-060
Anthracite / Dark
Grey / (Dark
Grey)



AA0736-354
Hyper Turq /
Green Glow /
(Hyper Turq)



AA0736-551
Vivid Purple /
Bright Violet /
(Vivid Purple)



AA0736-703
Volt / Electric
Green / (Volt)



AA0736-819
Safety Orange /
Total Orange /
(Safety Orange)

Product Features

- This product is made with at least 75% recycled polyester fibers.
- Nike Dry fabric moves sweat from your skin for quicker evaporation—helping you stay dry, comfortable and focused.
- 2 large chest pockets secure storage with interior strap closures.
- Raglan sleeves eliminate shoulder seams to let your arms move naturally.
- Color-tipping along the collar adds a subtle contrast.



Nike Dry Referee Top S/S

RRP £42.95

Lifecycle

June 2018 - March 2022

Available in

XS - S - M - L - XL - 2XL



AA0735-010
Black /
Anthracite /
(Anthracite)



AA0735-060
Anthracite / Dark
Grey / (Dark
Grey)



AA0735-354
Hyper Turq /
Green Glow /
(Hyper Turq)



AA0735-551
Vivid Purple /
Bright Violet /
(Vivid Purple)



AA0735-703
Volt / Electric
Green / (Volt)



AA0735-819
Safety Orange /
Total Orange /
(Safety Orange)

Product Features

- This product is made with at least 75% recycled polyester fibers.
- Nike Dry fabric moves sweat from your skin for quicker evaporation—helping you stay dry, comfortable and focused.
- 2 large chest pockets secure storage with interior strap closures.
- Raglan sleeves allow for a natural range of motion.
- Color-tipping along the collar adds a subtle contrast.



Nike Dry Referee Short

RRP £31.95

Lifecycle

June 2018 - March 2022

Available in

XS - S - M - L - XL - 2XL



AA0737-010
Black / Black /
(Anthracite)

Product Features

- This product is made with at least 50% recycled polyester fibers.
- Nike Vaporknit technology combines lightweight cooling, reduced cling and precision fit.
- Quick-drying, high-stretch yarn provides flexible comfort.
- Precision fit conforms to your body for a streamlined feel.



Matchfit Sock

RRP £12.95

Lifecycle

January 2020 - December 2021

Available in

XS: UK 12-2 - S: UK 2-5 - M: UK 5.5-7.5
- L: UK 8-11 - XL: UK 11-14.5



CV1956-010
Black /
Anthracite /
(White)



CV1956-100
White / White /
(Black)



CV1956-302
Pine Green /
Gorge Green /
(White)



CV1956-329
Green Spark /
(Black)



CV1956-354
Hyper Turq /
Hyper Turq /
(Black)



CV1956-412
University Blue /
Italy Blue /
(Midnight Navy)



CV1956-463
Royal Blue /
Midnight Navy /
(White)



CV1956-477
Team Royal /
(White)



CV1956-635
Bright Crimson /
Bright Crimson /
(Black)



CV1956-657
University Red /
Gym Red /
(White)



CV1956-719
Tour Yellow /
University Gold /
(Black)



CV1956-891
Team Orange /
(Black)

Product Features

- 92% Polyester/5% Cotton/3% Spandex.
- Dri-FIT technology helps keep feet dry and comfortable.
- Cushioning in high-wear areas adds durability and helps absorb impact.
- Dynamic arch provides a supportive fit and feel.
- Anatomically correct left/right design for a natural fit.



Classic Sock II

RRP £5.95

Lifecycle

January 2017 - December 2021

Available in

XS: UK 12-2 - S: UK 2-5 - M: UK 5.5-7.5
- L: UK 8-11 - XL: UK 11-14.5



SX5728-010
Black / (White)



SX5728-057
Pewter Grey /
(Black) / (Black)



SX5728-100
White / (Black)



SX5728-101
White / (Royal
Blue)



SX5728-302
Pine Green /
(White)



SX5728-411
Midnight Navy /
(White)



SX5728-412
University Blue /
(White)



SX5728-463
Royal Blue /
(White)



SX5728-545
Court Purple /
(White)



SX5728-648
University Red /
(White)



SX5728-670
Team Red /
(White)



SX5728-702
Volt / (Black)



SX5728-719
Tour Yellow /
(Black)



SX5728-739
University Gold /
(Black)



SX5728-816
Safety Orange /
(Black)

Product Features

- 97% Nylon/3% Spandex.
- Dri-FIT technology helps keep feet dry and comfortable.
- Cushioning in high-wear areas helps absorb impact.
- Dynamic arch provides a supportive fit and feel.
- Anatomical left and right socks are designed for a natural fit.



Nike Squad Leg Sleeve

RRP £6.95

Lifecycle

April 2020 - December 2021

Available in

S/M: UK 2-7.5 - L/XL: UK 8-14.5



SK0033-010
Black / (White)



SK0033-100
White / (Black)



SK0033-410
Midnight Navy /
(White)



SK0033-463
Royal Blue /
(White)



SK0033-657
University Red /
(White)

Product Features

- 95% Polyester/5% Spandex.
- Sweat-wicking design helps your feet stay dry and comfortable.
- Secure fit helps keep your shin guards in place.
- Mesh fabric adds ventilation.



NEW Nike Matchfit Sleeve

RRP £8.95

Lifecycle

January 2021 - December 2022

Available in

S/M: UK 2-7.5 - L/XL: UK 8-14.5



CU6419-010
Black / (White)



CU6419-100
White / (Black)



CU6419-401
Royal Blue /
(White)



CU6419-410
Midnight Navy /
(White)



CU6419-657
University Red /
(White)

Product Features

- 95% polyester/5% spandex.
- Sweat-wicking fabric helps keep you dry and comfortable.
- Ribbed design stretches for a secure fit.
- Comes in a pair.



Park First Layer

RRP £17.95

Lifecycle

January 2019 - December 2023

Available in

S - M - L - XL - 2XL



AV2609-010
Black / (White)



AV2609-057
Pewter Grey /
(White)



AV2609-100
White / (Cool
Grey)



AV2609-302
Pine Green /
(White)



AV2609-410
Midnight Navy /
(White)



AV2609-412
University Blue /
(White)



AV2609-463
Royal Blue /
(White)



AV2609-547
Court Purple /
(White)



AV2609-635
Bright Crimson /
(Black)



AV2609-657
University Red /
(White)



AV2609-702
Volt / (Black)



AV2609-719
Tour Yellow /
(Black)



AV2609-819
Safety Orange /
(White)

Product Features

- This product is made with 100% recycled polyester fibers.
- Dri-FIT technology helps you stay dry, comfortable and focused.
- Stretchy fabric with a smooth face provides a low-friction underlayer.
- Invisible thumb loops stay hidden when not in use.
- Tight fit gives a streamlined look and feel.
- Raglan sleeves eliminate the shoulder seam to help you move freely.
- Swoosh design trademark is heat transferred on the center of the chest.



 Sustainable materials

Park First Layer (Youth)

RRP £12.95

Lifecycle

January 2019 - December 2023

Available in

XS - S - M - L
XL

RRP £12.95

RRP £14.95



AV2611-010
Black / (White)



AV2611-057
Pewter Grey /
(White)



AV2611-100
White / (Cool
Grey)



AV2611-302
Pine Green /
(White)



AV2611-410
Midnight Navy /
(White)



AV2611-412
University Blue /
(White)



AV2611-463
Royal Blue /
(White)



AV2611-547
Court Purple /
(White)



AV2611-657
University Red /
(White)



AV2611-702
Volt / (Black)



AV2611-719
Tour Yellow /
(Black)



AV2611-819
Safety Orange /
(White)

Product Features

- This product is made with 100% recycled polyester fibers.
- Dri-FIT technology helps you stay dry, comfortable and focused.
- Stretchy fabric with a smooth face provides a low-friction underlayer.
- Invisible thumb loops stay hidden when not in use.
- Tight fit gives a streamlined look and feel.
- Raglan sleeves eliminate the shoulder seam to help you move freely.
- Swoosh design trademark is heat transferred on the center of the chest.



Men's Nike Pro Tight Fit Long-Sleeve Top

RRP £31.95

Lifecycle

October 2019 - June 2021

Available in

S - M - L - XL - 2XL



BV5588-010
Black / (White)



BV5588-068
Smoke Grey /
Light Smoke
Grey / (Black)



BV5588-100
White / (Black)



BV5588-480
Game Royal /
(Black)

Product Features

- Body: 91-93% Polyester/7-9% Spandex. Panels: 92% Polyester/8% Spandex.
- Nike Pro fabric with sweat-wicking technology helps you feel locked in and cool.
- Lightweight, stretchy fabric lets you move comfortably.
- Tight fit for a body-hugging feel.



Men's Nike Pro Long-Sleeve Top

RRP £31.95

Lifecycle

October 2019 - June 2021

Available in

S - M - L - XL - 2XL



BV5592-010
Black / (White)

Product Features

- Fabric: Body: 91% Polyester/9% Spandex. Panels: 92% Polyester/8% Spandex.
- Nike Pro fabric with sweat-wicking technology helps you feel locked in and cool.
- Lightweight, stretchy fabric lets you move comfortably.
- Tight fit for a body-hugging feel.



Men's Nike Pro Tight

RRP £31.95

Lifecycle

October 2019 - June 2021

Available in

S - M - L - XL - 2XL



BV5641-010
Black / (White)

Product Features

- Body: 91-93% Polyester/7-9% Spandex. Panels: 92% Polyester/8% Spandex.
- Nike Pro fabric with sweat-wicking technology helps you feel locked in and cool.
- Lightweight, stretchy fabric lets you move comfortably.
- Tight fit for a body-hugging feel.



Men's Nike Pro Tight Fit Short-Sleeve Top

RRP £26.95

Lifecycle

October 2019 - June 2021

Available in

S - M - L - XL - 2XL



BV5631-010
Black / (White)



BV5631-100
White / (Black)

Product Features

- Body: 91-93% Polyester/7-9% Spandex. Panels: 92% Polyester/8% Spandex.
- Nike Pro fabric with sweat-wicking technology helps you feel locked in and cool.
- Stretchy, lightweight fabric lets you move comfortably.
- Tight fit for a body-hugging feel.



Men's Nike Pro Short Long

RRP £22.95

Lifecycle

October 2019 - June 2021

Available in

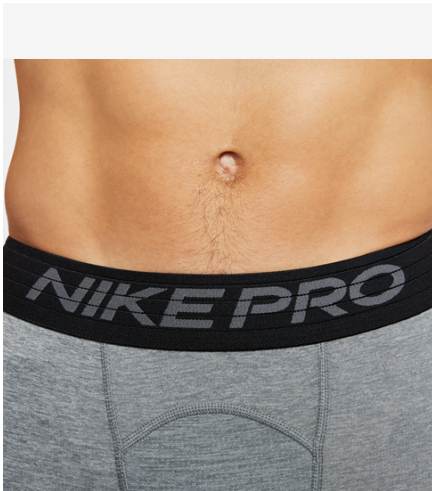
S - M - L - XL - 2XL



BV5637-010
Black / (White)

Product Features

- Body: 90-93% Polyester/7-10% Spandex. Mesh: 92% Polyester/8% Spandex. Elastic: 46% Nylon/43% Recycled Polyester/11% Spandex.
- Nike Pro fabric provides a sweat-wicking layer of support to help you feel locked in and cool when the action heats up.
- The snug elastic waistband is updated to be slightly higher and thicker for more support and is vented for breathability.
- Tight fit for a body-hugging feel.
- Double-layer mesh pouch for breathability.



Men's Nike Pro Short

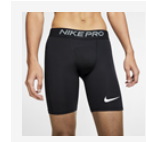
RRP £22.95

Lifecycle

October 2019 - June 2021

Available in

S - M - L - XL - 2XL



BV5635-010
Black / (White)



BV5635-085
Smoke Grey /
Light Smoke
Grey / (Black)



BV5635-100
White / (Black)

Product Features

- Body: 90-93% Polyester/7-10% Spandex. Mesh: 92% Polyester/8% Spandex. Elastic: 46% Nylon/43% Recycled Polyester/11% Spandex.
- Nike Pro fabric provides a sweat-wicking base layer of support to help you feel locked in and cool when the action heats up.
- Stretchy fabric with a tight feel allows you to move naturally.
- The snug elastic waistband is updated to be slightly higher and thicker for more support and is vented for breathability.
- Double-layered mesh pouch is breathable.
- Tight fit for a body-hugging feel.



Women's Alpha High-Support Sports Bra

RRP £39.95

Lifecycle

January 2020 - December 2021

Available in

XS (A-C) - S (A-C) - S (D-E) - M (A-C) -
M (D-E) - L (A-C) - L (D-E) - XL (D-E)



AJ0340-010
Black / (White)

Product Features

- Fabric: Body/back lining insets: 79% Nylon/21% Spandex. Mesh/mesh lining: 81% Nylon/19% Spandex. Pad: 100% Polyurethane. Pad back fabric: 100%
- Dri-FIT technology helps keep feet dry and comfortable.
- Cups help keep your natural shape.
- Perforations for breathability where you need it.
- Adjustable back clasp for easy on and off.
- Dri-FIT technology helps keep you dry and comfortable.
- Modified racerback design lets you move freely.



Women's Nike Swoosh Medium-Support 1-Piece Pad

RRP £31.95

Lifecycle

April 2020 - December 2024

Available in

XS - S - M - L - XL - 2XL

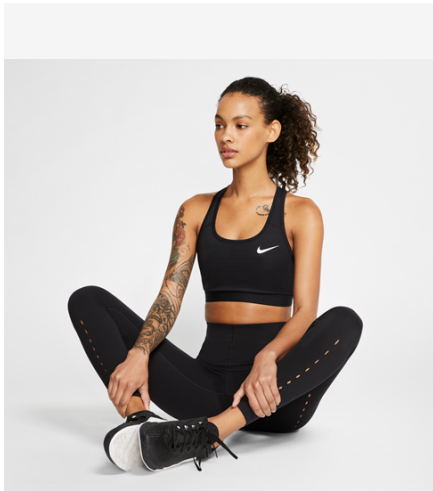
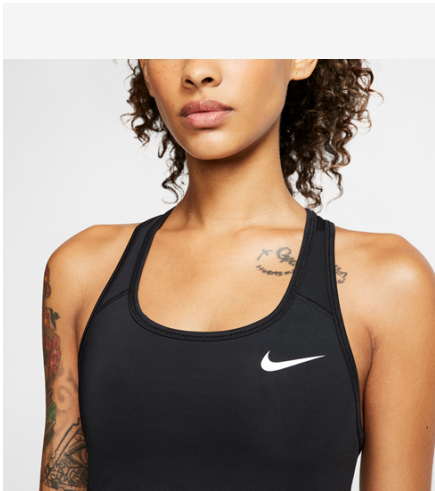
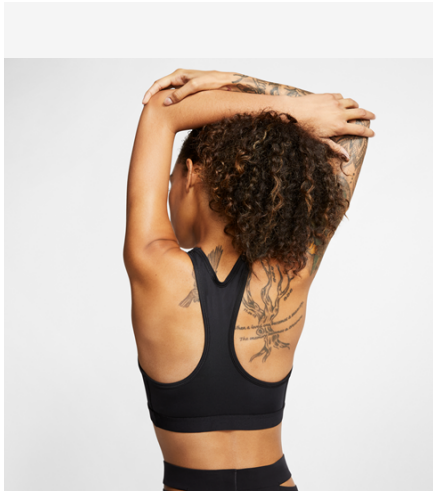
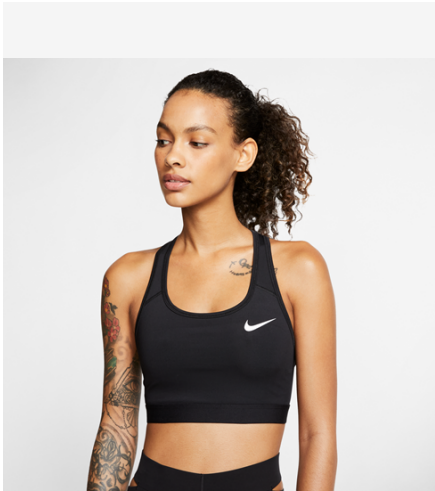


BV3636-010
Black / (White)

Product Features

- This product is made with at least 50% recycled polyester fibers.
- Nike Pro fabric provides a sweat-wicking base layer of support to help you feel locked in and cool when the action heats up.
- Stretchy fabric with a tight feel allows you to move naturally.
- The snug elastic waistband is updated to be slightly higher and thicker for more support and is vented for breathability.
- Double-layered mesh pouch is breathable.
- Tight fit for a body-hugging feel.





Women's Victory Swoosh Medium-Support Sports Bra

RRP £22.95

Lifecycle

January 2020 - December 2024

Available in

XS - S - M - L - XL - 2XL



BV3900-010
White / Black /
(Black)



BV3900-100
Black / Black /
(White)

Product Features

- This product is made with at least 75% recycled polyester fibers.
- Dri-FIT technology helps keep feet dry and comfortable.
- Exposed elastic band resists slipping so it stays in place.
- Tight fit for a body-hugging feel.
- Non padded.



NEW Women's Tights

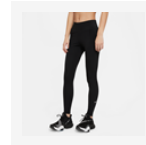
RRP £34.95

Lifecycle

January 2021 - December 2022

Available in

XS - S - M - L - XL - 2XL



DD0252-010
Black / (White)

Product Features

- This product is made with at least 50% recycled polyester fibers.
- Stretchy fabric with Dri-FIT technology moves sweat from your skin for quicker evaporation to help you stay dry and comfortable.
- Soft fabric stays opaque to help keep you confidently covered, whether you're reaching for groceries or bending into a squat. The sides are seamless and the
- The design includes 2 hidden pockets in the mid-rise waistband to keep you ready for whatever you tackle in a day. The pocket at the back is big enough to
- Tight fit for a body-hugging feel.
- Full length.



NEW Women's 365 Tight

RRP £34.95

Lifecycle

January 2021 - December 2022

Available in

S - M - L - XL - 2XL



CZ9779-010
Black / (White)

Product Features

- This product is made with at least 50% recycled polyester fibers.
- Nike Dri-FIT technology helps you stay dry, comfortable and focused.
- A wide, smooth mid-rise waistband feels supportive around your core.
- Ventilated mesh panels along the back of the lower legs create airflow for breathability.
- Tight fit for a body-hugging feel.
- Mid rise.



Sustainable materials



 Sustainable materials

Women's 365 Short

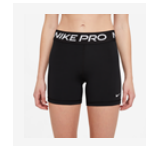
RRP £22.95

Lifecycle

January 2021 - December 2022

Available in

XS - S - M - L - XL - 2XL



CZ9831-010
Black / (White)

Product Features

- This product is made with at least 50% recycled polyester fibers.
- Stretchy fabric with Dri-FIT technology helps keep you feeling dry, comfortable and supported.
- The mid-rise design has a wide elastic waistband that wraps your core in supportive comfort.
- The curved seam at the back and seams placed toward the back highlight your natural lines while reducing distractions.
- Tight fit for a body-hugging feel.
- Inseam: 5".



TRAINING



 Sustainable materials

NEW Academy 21 Training Top

RRP £16.95

Lifecycle

January 2021 - December 2022

Available in

XS - S - M - L - XL - 2XL



CW6101-014
Black / White /
Anthracite /
(White)



CW6101-100
White / Black /
Black / (Black)



CW6101-362
Light Green
Spark / White /
Pine Green /
(White)



CW6101-453
Obsidian / White
/ Royal Blue /
(White)



CW6101-463
Royal Blue /
White / Obsidian
/ (White)



CW6101-657
University Red /
White / Gym Red
/ (White)



CW6101-677
Team Red /
White / Jersey
Gold / (White)



CW6101-719
Tour Yellow /
Black /
Anthracite /
(Black)

Product Features

- This product is made with 100% recycled polyester fibers.
- Dri-FIT technology helps keep you dry and comfortable.
- Knit fabric is smooth, lightweight and doesn't cling to your body.
- Mesh panels on the back and sides help you stay cool.
- Standard fit for a relaxed, easy feel.



 Sustainable materials

NEW Academy 21 Training Top (Youth)

RRP £10.95

Lifecycle

January 2021 - December 2022

Available in

XS - S - M - L
XL

RRP £10.95

RRP £12.95



CW6103-014
Black / White /
Anthracite /
(White)



CW6103-100
White / Black /
Black / (Black)



CW6103-362
Light Green
Spark / White /
Pine Green /
(White)



CW6103-453
Obsidian / White
/ Royal Blue /
(White)



CW6103-463
Royal Blue /
White / Obsidian
/ (White)



CW6103-657
University Red /
White / Gym Red
/ (White)



CW6103-677
Team Red /
White / Jersey
Gold / (White)



CW6103-719
Tour Yellow /
Black /
Anthracite /
(Black)

Product Features

- This product is made with 100% recycled polyester fibers.
- Dri-FIT technology helps keep you dry and comfortable.
- Mesh on the back and sleeves allow airflow so you stay cool.
- Standard fit for a relaxed, easy feel.



 Sustainable materials

Academy 21 Polo

RRP £26.95

Lifecycle

January 2021 - December 2022

Available in

S - M - L - XL - 2XL



CW6104-014
Black / White /
Anthracite /
(White)



CW6104-100
White / Black /
Black / (Black)



CW6104-362
Light Green
Spark / White /
Pine Green /
(White)



CW6104-453
Obsidian / White
/ Royal Blue /
(White)



CW6104-463
Royal Blue /
White / Obsidian
/ (White)



CW6104-657
University Red /
White / Gym Red
/ (White)



CW6104-677
Team Red /
White / Jersey
Gold / (White)



CW6104-719
Tour Yellow /
Black /
Anthracite /
(Black)

Product Features

- This product is made with 100% recycled polyester fibers.
- Nike Dri-FIT technology helps keep you dry and comfortable.
- Fold-over collar and 2-button placket create a classic look.
- Standard fit for a relaxed, easy feel.



 Sustainable materials

NEW Academy 21 Polo (Youth)

RRP £20.95

Lifecycle

January 2021 - December 2022

Available in

XS - S - M - L
XL

RRP £20.95

RRP £23.95



CW6106-014
Black / White /
Anthracite /
(White)



CW6106-100
White / Black /
Black / (Black)



CW6106-362
Light Green
Spark / White /
Pine Green /
(White)



CW6106-453
Obsidian / White
/ Royal Blue /
(White)



CW6106-463
Royal Blue /
White / Obsidian
/ (White)



CW6106-657
University Red /
White / Gym Red
/ (White)



CW6106-677
Team Red /
White / Jersey
Gold / (White)



CW6106-719
Tour Yellow /
Black /
Anthracite /
(Black)

Product Features

- This product is made with 100% recycled polyester fibers.
- Nike Dri-FIT technology helps keep you dry and comfortable.
- Fold-over collar and 2-button placket create a classic look.
- Standard fit for a relaxed, easy feel.



 Sustainable materials

Academy 21 Drill Top

RRP £32.95

Lifecycle

January 2021 - December 2022

Available in

XS - S - M - L - XL - 2XL



CW6110-014
Black / White /
Anthracite /
(White)



CW6110-100
White / Black /
Black / (Black)



CW6110-362
Light Green
Spark / White /
Pine Green /
(White)



CW6110-453
Obsidian / White
/ Royal Blue /
(White)



CW6110-463
Royal Blue /
White / Obsidian
/ (White)



CW6110-657
University Red /
White / Gym Red
/ (White)



CW6110-677
Team Red /
White / Jersey
Gold / (White)



CW6110-719
Tour Yellow /
Black /
Anthracite /
(Black)

Product Features

- This product is made with 100% recycled polyester fibers.
- Dri-FIT technology moves sweat from your skin for quicker evaporation—helping you stay dry and comfortable.
- Lightweight fabric stretches with you, while thumbholes help keep your sleeves in place.
- 1/4-length zipper lets you adjust your ventilation when things heat up.
- Standard fit for a relaxed, easy feel.



 Sustainable materials

NEW Academy 21 Drill Top (Youth)

RRP £25.95

Lifecycle

January 2021 - December 2022

Available in

XS - S - M - L
XL

RRP £25.95

RRP £29.95



CW6112-014
Black / White /
Anthracite /
(White)



CW6112-100
White / Black /
Black / (Black)



CW6112-362
Light Green
Spark / White /
Pine Green /
(White)



CW6112-453
Obsidian / White
/ Royal Blue /
(White)



CW6112-463
Royal Blue /
White / Obsidian
/ (White)



CW6112-657
University Red /
White / Gym Red
/ (White)



CW6112-677
Team Red /
White / Jersey
Gold / (White)



CW6112-719
Tour Yellow /
Black /
Anthracite /
(Black)

Product Features

- This product is made with 100% recycled polyester fibers.
- Dri-FIT technology moves sweat from your skin for quicker evaporation—helping you stay dry and comfortable.
- Lightweight fabric stretches with you, while thumbholes help keep your sleeves in place.
- 1/4-length zipper lets you adjust your ventilation when things heat up.
- Standard fit for a relaxed, easy feel.



NEW Academy 21 Knit Track Jacket

RRP £34.95

Lifecycle

January 2021 - December 2022

Available in

S - M - L - XL - 2XL



CW6113-014
Black / White /
Anthracite /
(White)



CW6113-100
White / Black /
Black / (Black)



CW6113-362
Light Green
Spark / White /
Pine Green /
(White)



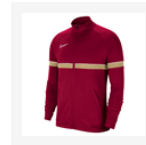
CW6113-453
Obsidian / White
/ Royal Blue /
(White)



CW6113-463
Royal Blue /
White / Obsidian
/ (White)



CW6113-657
University Red /
White / Gym Red
/ (White)



CW6113-677
Team Red /
White / Jersey
Gold / (White)



CW6113-719
Tour Yellow /
Black /
Anthracite /
(Black)

Product Features

- This product is made with at least 75% recycled polyester fibers.
- Dri-FIT technology helps keep you dry and comfortable.
- Knit fabric feels soft, warm and slightly stretchy.
- Mesh panels across the chest help keep you cool.
- Standard fit for a relaxed, easy feel.
- Zippered pockets.



 Sustainable materials

NEW Academy 21 Knit Track Jacket (Youth)

RRP £26.95

Lifecycle

January 2021 - December 2022

Available in

XS - S - M - L
XL

RRP £26.95
RRP £31.95



CW6115-014
Black / White /
Anthracite /
(White)



CW6115-100
White / Black /
Black / (Black)



CW6115-362
Light Green
Spark / White /
Pine Green /
(White)



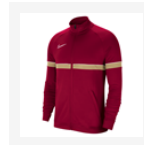
CW6115-453
Obsidian / White
/ Royal Blue /
(White)



CW6115-463
Royal Blue /
White / Obsidian
/ (White)



CW6115-657
University Red /
White / Gym Red
/ (White)



CW6115-677
Team Red /
White / Jersey
Gold / (White)



CW6115-719
Tour Yellow /
Black /
Anthracite /
(Black)

Product Features

- This product is made with at least 75% recycled polyester fibers.
- Dri-FIT technology helps keep you dry and comfortable.
- Knit fabric feels soft, warm and slightly stretchy.
- Mesh panel across the chest adds breathability.
- Standard fit for a relaxed, easy feel.
- Zippered pockets.



NEW Academy 21 Woven Track Jacket

RRP £34.95

Lifecycle

January 2021 - December 2022

Available in

S - M - L - XL - 2XL



CW6118-014
Black / White /
Anthracite /
(White)



CW6118-100
White / Black /
Black / (Black)



CW6118-362
Light Green
Spark / White /
Pine Green /
(White)



CW6118-453
Obsidian / White
/ Royal Blue /
(White)



CW6118-463
Royal Blue /
White / Obsidian
/ (White)



CW6118-657
University Red /
White / Gym Red
/ (White)



CW6118-677
Team Red /
White / Jersey
Gold / (White)



CW6118-719
Tour Yellow /
Black /
Anthracite /
(Black)

Product Features

- This product is made with 100% recycled polyester fibers.
- Dri-FIT technology helps keep you dry and comfortable.
- Taffeta fabric is light and durable.
- Mesh panel across the chest adds breathability.
- Standard fit for a relaxed, easy feel.
- Zippered pockets.



 Sustainable materials

NEW Academy 21 Woven Track Jacket (Youth)

RRP £26.95

Lifecycle

January 2021 - December 2022

Available in

XS - S - M - L
XL

RRP £26.95

RRP £31.95



CW6121-014
Black / White /
Anthracite /
(White)



CW6121-100
White / Black /
Black / (Black)



CW6121-362
Light Green
Spark / White /
Pine Green /
(White)



CW6121-453
Obsidian / White
/ Royal Blue /
(White)



CW6121-463
Royal Blue /
White / Obsidian
/ (White)



CW6121-657
University Red /
White / Gym Red
/ (White)



CW6121-677
Team Red /
White / Jersey
Gold / (White)



CW6121-719
Tour Yellow /
Black /
Anthracite /
(Black)

Product Features

- This product is made with 100% recycled polyester fibers.
- Dri-FIT technology helps keep you dry and comfortable.
- Taffeta fabric is light and durable.
- Mesh panel across the chest adds breathability.
- Standard fit for a relaxed, easy feel.
- Zippered pockets.



NEW Academy 21 Knit Short

RRP £16.95

Lifecycle

January 2021 - December 2022

Available in

XS - S - M - L - XL - 2XL



CW6107-010
Black / White /
White / (White)



CW6107-451
Obsidian / White
/ White / (White)

Product Features

- This product is made with 100% recycled polyester fibers.
- Dri-FIT technology helps keep you dry and comfortable.
- Mesh stripes add breathability.
- Drawcord waistband gives you the perfect fit.
- Standard fit for a relaxed, easy feel.



NEW Academy 21 Knit Short
(Youth)

RRP £10.95

Lifecycle
January 2021 - December 2022

Available in
XS - S - M - L
XL

RRP £10.95
RRP £12.95



CW6109-010
Black / White /
White / (White)



CW6109-451
Obsidian / White
/ White / (White)

Product Features

- This product is made with 100% recycled polyester fibers.
- Nike Dri-FIT technology helps keep you dry and comfortable.
- Elastic waistband and drawcord give you a snug fit.
- Standard fit for a relaxed, easy feel.





NEW Academy 21 Knit Pant

RRP £30.95

Lifecycle

January 2021 - December 2022

Available in

XS - S - M - L - XL - 2XL



CW6122-010
Black / White /
White / (White)



CW6122-451
Obsidian / White
/ White / (White)

Product Features

- This product is made with 100% recycled polyester fibers.
- Dri-FIT technology moves sweat from your skin for quicker evaporation—helping you stay dry and comfortable.
- The tapered design features zippered hems so you can change quickly over your shoes or cleats.
- An elastic waistband is lined with mesh for a breathable, snug feel.
- Standard fit for a relaxed, easy feel.
- Zippered pockets.



 Sustainable materials

NEW Academy 21 Knit Pant (Youth)

RRP £23.95

Lifecycle

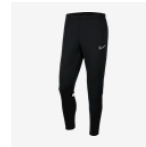
January 2021 - December 2022

Available in

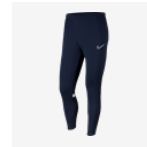
XS - S - M - L
XL

RRP £23.95

RRP £27.95



CW6124-010
Black / White /
White / (White)



CW6124-451
Obsidian / White
/ White / (White)

Product Features

- This product is made with 100% recycled polyester fibers.
- Dri-FIT technology helps keep you dry and comfortable.
- Tapered legs help keep your feet clear when you're on the ball.
- Zippered hems let you change easily over cleats or shoes.
- Elastic waistband is lined with mesh for a snug, yet breathable fit.
- Mesh stripes behind the knees allow airflow.
- Standard fit for a relaxed, easy feel.
- Zippered pockets.



NEW Academy 21 Woven Track Pant

RRP £34.95

Lifecycle

January 2021 - December 2022

Available in

XS - S - M - L - XL - 2XL



CW6128-010
Black / White /
White / (White)



CW6128-451
Obsidian / White
/ White / (White)

Product Features

- This product is made with 100% recycled polyester fibers.
- Dri-FIT technology helps you stay dry and comfortable.
- Tapered legs keep your feet clear when you're on the ball.
- Zippered hems let you change easily over cleats or shoes.
- Elastic waistband gives you a secure fit.
- Standard fit for a relaxed, easy feel.
- Zippered pockets.



 Sustainable materials

NEW Academy 21 Woven Track Pant (Youth)

RRP £26.95

Lifecycle

January 2021 - December 2022

Available in

XS - S - M - L
XL

RRP £26.95

RRP £31.95



CW6130-010
Black / White /
White / (White)



CW6130-451
Obsidian / White
/ White / (White)

Product Features

- This product is made with 100% recycled polyester fibers.
- Dri-FIT technology helps you stay dry and comfortable.
- Tapered legs keep your feet clear when you're on the ball.
- Zippered hems let you change easily over cleats or shoes.
- Elastic waistband gives you a secure fit.
- Standard fit for a relaxed, easy feel.
- Zippered pockets.



Academy 21 3/4 Knit Pant

RRP £26.95

Lifecycle

January 2021 - December 2022

Available in

S - M - L - XL - 2XL



CW6125-010
Black / White /
White / (White)



CW6125-451
Obsidian / White
/ White / (White)

Product Features

- This product is made with 100% recycled polyester fibers.
- Dri-FIT technology helps you stay dry and comfortable.
- Shorter length keeps your feet clear when you're on the ball.
- Mesh on the lower back legs adds breathability.
- Elastic waistband and hidden drawcord create a secure fit.
- Standard fit for a relaxed, easy feel.
- Zippered pockets.





 Sustainable materials

NEW Academy 21 3/4 Knit Pant (Youth)

RRP £19.95

Lifecycle

January 2021 - December 2022

Available in

XS - S - M - L
XL

RRP £19.95

RRP £22.95



CW6127-010
Black / White /
White / (White)



CW6127-451
Obsidian / White
/ White / (White)

Product Features

- This product is made with 100% recycled polyester fibers.
- Dri-FIT technology helps you stay dry and comfortable.
- Shorter length keeps your feet clear when you're on the ball.
- Mesh on the lower back legs adds breathability.
- Elastic waistband and hidden drawcord create a secure fit.
- Standard fit for a relaxed, easy feel.
- Zippered pockets.



NEW Women's Academy 21 Training Top

RRP £16.95

Lifecycle

January 2021 - December 2022

Available in

XS - S - M - L - XL



CV2627-014
Black / White /
Anthracite /
(White)



CV2627-100
White / Black /
Black / (Black)



CV2627-362
Light Green
Spark / White /
Pine Green /
(White)



CV2627-453
Obsidian / White
/ Royal Blue /
(White)



CV2627-463
Royal Blue /
White / Obsidian
/ (White)



CV2627-657
University Red /
White / Gym Red
/ (White)



CV2627-677
Team Red /
White / Jersey
Gold / (White)



CV2627-719
Tour Yellow /
Black /
Anthracite /
(Black)

Product Features

- This product is made with 100% recycled polyester fibers.
- Dri-FIT technology helps keep you dry and comfortable.
- Knit fabric is smooth, lightweight and doesn't cling to your body.
- Mesh panels on the back and sides help you stay cool.
- Standard fit for a relaxed, easy feel.





NEW Women's Academy 21 Polo

RRP £26.95

Lifecycle

January 2021 - December 2022

Available in

XS - S - M - L - XL



CV2673-014
Black / White /
Anthracite /
(White)



CV2673-100
White / Black /
Black / (Black)



CV2673-362
Light Green
Spark / White /
Pine Green /
(White)



CV2673-453
Obsidian / White
/ Royal Blue /
(White)



CV2673-463
Royal Blue /
White / Obsidian
/ (White)



CV2673-657
University Red /
White / Gym Red
/ (White)



CV2673-677
Team Red /
White / Jersey
Gold / (White)



CV2673-719
Tour Yellow /
Black /
Anthracite /
(Black)

Product Features

- This product is made with 100% recycled polyester fibers.
- Nike Dri-FIT technology helps keep you dry and comfortable.
- Mesh on the back and sleeves helps keep you cool.
- Double knit fabric feels soft and smooth.
- Standard fit for a relaxed, easy feel.
- Fold-over collar.
- 2-button placket.



Sustainable materials



NEW Women's Academy 21 Drill Top

RRP £32.95

Lifecycle

January 2021 - December 2022

Available in

XS - S - M - L - XL



CV2653-014
Black / White /
Anthracite /
(White)



CV2653-100
White / Black /
Black / (Black)



CV2653-362
Light Green
Spark / White /
Pine Green /
(White)



CV2653-453
Obsidian / White
/ Royal Blue /
(White)



CV2653-463
Royal Blue /
White / Obsidian
/ (White)



CV2653-657
University Red /
White / Gym Red
/ (White)



CV2653-677
Team Red /
White / Jersey
Gold / (White)



CV2653-719
Tour Yellow /
Black /
Anthracite /
(Black)

Product Features

- This product is made with 100% recycled polyester fibers.
- Dri-FIT technology moves sweat from your skin for quicker evaporation—helping you stay dry and comfortable.
- Lightweight fabric stretches with you, while thumbholes help keep your sleeves in place.
- 1/4-length zipper lets you adjust your ventilation when things heat up.
- Standard fit for a relaxed, easy feel.



NEW Women's Academy 21 Track Jacket

RRP £34.95

Lifecycle

January 2021 - December 2022

Available in

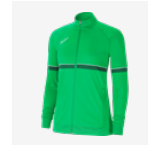
XS - S - M - L - XL



CV2677-014
Black / White /
Anthracite /
(White)



CV2677-100
White / Black /
Black / (Black)



CV2677-362
Light Green
Spark / White /
Pine Green /
(White)



CV2677-453
Obsidian / White
/ Royal Blue /
(White)



CV2677-463
Royal Blue /
White / Obsidian
/ (White)



CV2677-657
University Red /
White / Gym Red
/ (White)



CV2677-677
Team Red /
White / Jersey
Gold / (White)



CV2677-719
Tour Yellow /
Black /
Anthracite /
(Black)

Product Features

- This product is made with at least 75% recycled polyester fibers.
- Dri-FIT technology helps keep you dry and comfortable.
- Knit fabric feels soft, warm and slightly stretchy.
- Mesh panels across the chest help keep you cool.
- Standard fit for a relaxed, easy feel.
- Zippered pockets.



NEW Women's Academy 21 Short

RRP £16.95

Lifecycle

January 2021 - December 2022

Available in

XS - S - M - L - XL



CV2649-010
Black / White /
White / (White)



CV2649-451
Obsidian / White
/ White / (White)

Product Features

- This product is made with 100% recycled polyester fibers.
- Dri-FIT technology helps keep you dry and comfortable.
- Drawcord waistband gives you the perfect fit.
- Mesh stripes add breathability.
- Standard fit for a relaxed, easy feel.



Sustainable materials



NEW Women's Academy 21 Pant

RRP £30.95

Lifecycle

January 2021 - December 2022

Available in

XS - S - M - L - XL



CV2665-010
Black / White /
White / (White)



CV2665-451
Obsidian / White
/ White / (White)

Product Features

- This product is made with 100% recycled polyester fibers.
- Dri-FIT technology moves sweat from your skin for quicker evaporation—helping you stay dry and comfortable.
- The tapered design features zippered hems so you can change quickly over your shoes or cleats.
- An elastic waistband is lined with mesh for a breathable, snug feel.
- Standard fit for a relaxed, easy feel.
- Zippered pockets.



Academy Pro Top

RRP £19.95

Lifecycle

January 2020 - December 2021

Available in

XS - S - M - L - XL - 2XL



BV6926-073
Anthracite /
Black / Black /
(White)



BV6926-074
Anthracite /
Green Strike /
Green Strike /
(White)



BV6926-075
Anthracite /
Photo Blue /
Photo Blue /
(White)



BV6926-079
Anthracite /
Bright Crimson /
Bright Crimson /
(White)

Product Features

- This product is made with at least 75% recycled polyester fibers.
- Dri-FIT technology helps you stay dry, comfortable and focused.
- Mesh chest stripe and back panel create breathability.
- Ribbed fabric is soft and slightly textured.
- Standard fit for a relaxed, easy feel.
- Materials vary based on factory. Check label for actual content.





 Sustainable materials

Academy Pro Top (Youth)

RRP £12.95

Lifecycle

January 2020 - December 2021

Available in

XS - S - M - L
XL

RRP £12.95

RRP £14.95



BV6947-062
Anthracite /
Photo Blue /
Photo Blue /
(White)



BV6947-064
Anthracite /
Bright Crimson /
Bright Crimson /
(White)



BV6947-068
Anthracite /
Green Strike /
Green Strike /
(White)



BV6947-069
Anthracite /
Black / Black /
(White)

Product Features

- This product is made with at least 75% recycled polyester fibers.
- Dri-FIT technology helps you stay dry, comfortable and focused.
- Ribbed fabric is soft and slightly textured for a premium feel.
- Mesh chest stripe and back panel provides added breathability.
- Standard fit for a relaxed, easy feel.



 Sustainable materials

Academy Pro Polo

RRP £34.95

Lifecycle

January 2020 - December 2021

Available in

S - M - L - XL - 2XL



BV6922-060
Anthracite /
Green Strike /
(White)



BV6922-062
Anthracite /
Black / (White)



BV6922-068
Anthracite /
Photo Blue /
(White)



BV6922-069
Anthracite /
Bright Crimson /
(White)

Product Features

- This product is made with 100% recycled polyester fibers.
- Dri-FIT technology helps you stay dry, comfortable and focused.
- Soft knit fabric has a little bit of stretch.
- Standard fit for a relaxed, easy feel.



 Sustainable materials

Academy Pro Polo (Youth)

RRP £26.95

Lifecycle

January 2020 - December 2021

Available in

XS - S - M - L
XL

RRP £26.95

RRP £31.95



BV6949-060
Anthracite /
Green Strike /
(White)



BV6949-062
Anthracite /
Black / (White)



BV6949-067
Anthracite /
Photo Blue /
(White)



BV6949-069
Anthracite /
Bright Crimson /
(White)

Product Features

- This product is made with 100% recycled polyester fibers.
- Dri-FIT technology helps keep you dry and comfortable.
- Ribbed fabric is soft and slightly textured for a premium feel.
- Fold-over ribbed collar delivers a timeless, professional look.



Academy Pro Drill Top

RRP £37.95

Lifecycle

January 2020 - December 2021

Available in

S - M - L - XL - 2XL



BV6916-010
Black /
Anthracite /
Black / (White)



BV6916-398
Green Strike /
Anthracite /
Green Strike /
(White)



BV6916-406
Photo Blue /
Anthracite /
Photo Blue /
(White)



BV6916-635
Bright Crimson /
Anthracite /
Bright Crimson /
(White)

Product Features

- Body: 100% Recycled Polyester. Mesh: 100% Polyester.
- Dri-FIT technology moves sweat from your skin for quicker evaporation — helping you stay dry, comfortable and focused.
- Stretchy fabric fits close to your arms. Invisible Thumb Loops hold your sleeves in place or remain concealed when not in use.
- Body fabric has a soft interior to help keep your core warm. The 1/4-length zipper lets you adjust your ventilation.



Academy Pro Drill Top (Youth)

RRP £29.95

Lifecycle

January 2020 - December 2021

Available in

XS - S - M - L
XL

RRP £29.95

RRP £34.95



BV6942-010
Black /
Anthracite /
Black / (White)



BV6942-398
Green Strike /
Anthracite /
Green Strike /
(White)



BV6942-406
Photo Blue /
Anthracite /
Photo Blue /
(White)



BV6942-635
Bright Crimson /
Anthracite /
Bright Crimson /
(White)

Product Features

- 100% Polyester.
- Dri-FIT technology helps you stay dry, comfortable and focused.
- Stretchy, lightweight fabric fits close to your arms.
- Invisible Thumb Loops hold your sleeves in place or remain concealed when not in use.
- Fabric with a lightly textured interior helps keep your core warm.
- The 1/4-length zipper lets you adjust your ventilation.



Academy Pro Knit Track Jacket

RRP £42.95

Lifecycle

January 2020 - December 2021

Available in

S - M - L - XL - 2XL



BV6918-060
Anthracite /
Green Strike /
(White)



BV6918-067
Anthracite /
Photo Blue /
(White)



BV6918-068
Anthracite /
Bright Crimson /
(White)



BV6918-069
Anthracite /
Black / (White)

Product Features

- 100% Polyester.
- Dri-FIT technology helps you stay dry, comfortable and focused.
- Zippered side pockets securely store small items.
- Standard fit for a relaxed, easy feel.
- Full-length zipper.



Academy Pro Knit Track Jacket (Youth)

RRP £31.95

Lifecycle

January 2020 - December 2021

Available in

XS - S - M - L
XL

RRP £31.95

RRP £37.95



BV6948-061
Anthracite /
Black / (White)



BV6948-064
Anthracite /
Green Strike /
(White)



BV6948-068
Anthracite /
Bright Crimson /
(White)



BV6948-069
Anthracite /
Photo Blue /
(White)

Product Features

- 100% Polyester.
- Dri-FIT technology helps you stay dry, comfortable and focused.
- Zippered side pockets securely store small items.
- Standard fit for a relaxed, easy feel.
- Full-length zipper.



Academy Pro Knit Short

RRP £19.95

Lifecycle

January 2020 - December 2021

Available in

XS - S - M - L - XL - 2XL



BV6924-061
Anthracite /
Black / (White)



BV6924-064
Anthracite /
Green Strike /
(White)



BV6924-067
Anthracite /
Bright Crimson /
(White)



BV6924-069
Anthracite /
Photo Blue /
(White)

Product Features

- This product is made with at least 50% recycled polyester fibers.
- Dri-FIT technology helps you stay dry, comfortable and focused.
- Mesh-lined waistband and mesh lower back area adds breathability.
- Lightly ribbed fabric has a little bit of stretch.
- Slim fit for a tailored feel.
- Side pockets.
- Elastic waistband and drawcord.



Sustainable materials



Academy Knit Short (Youth)

RRP £12.95

Lifecycle

January 2020 - December 2021

Available in

XS - S - M - L
XL

RRP £12.95

RRP £14.95



BV6946-062
Anthracite /
Bright Crimson /
(White)



BV6946-066
Anthracite /
Photo Blue /
(White)



BV6946-067
Anthracite /
Black / (White)



BV6946-068
Anthracite /
Green Strike /
(White)

Product Features

- This product is made with at least 50% recycled polyester fibers.
- Dri-FIT technology helps you stay dry, comfortable and focused.
- Mesh side stripes add ventilation.
- Standard fit for a relaxed, easy feel.
- Side pockets.





Academy Pro Knit Pant

RRP £34.95

Lifecycle

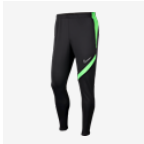
January 2020 - December 2021

Available in

XS - S - M - L - XL - 2XL



BV6920-061
Anthracite /
Black / (White)



BV6920-064
Anthracite /
Green Strike /
(White)



BV6920-067
Anthracite /
Photo Blue /
(White)



BV6920-070
Anthracite /
Bright Crimson /
(White)

Product Features

- This product is made with at least 75% recycled polyester fibers.
- Dri-FIT technology helps you stay dry, comfortable and focused.
- Zippered side pockets store your essentials.
- Standard fit for a relaxed, easy feel.





 Sustainable materials

Academy Pro Knit Pant (Youth)

RRP £25.95

Lifecycle

January 2020 - December 2021

Available in

XS - S - M - L
XL

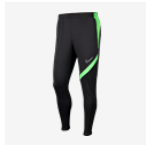
RRP £25.95

RRP £29.95



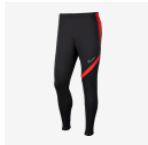
BV6944-064

Anthracite /
Black / (White)



BV6944-066

Anthracite /
Green Strike /
(White)



BV6944-067

Anthracite /
Bright Crimson /
(White)



BV6944-069

Anthracite /
Photo Blue /
(White)

Product Features

- This product is made with at least 75% recycled polyester fibers.
- Dri-FIT technology helps you stay dry, comfortable and focused.
- Zippered side pockets store your essentials.
- Standard fit for a relaxed, easy feel.



Women's Academy Pro Top

RRP £19.95

Lifecycle

January 2020 - December 2021

Available in

XS - S - M - L - XL



BV6940-010
Anthracite /
Black / Black /
(White)



BV6940-062
Anthracite /
Green Strike /
Green Strike /
(White)



BV6940-066
Anthracite /
Bright Crimson /
Bright Crimson /
(White)



BV6940-068
Anthracite /
Photo Blue /
Photo Blue /
(White)

Product Features

- This product is made with at least 50% recycled polyester fibers.
- Dri-FIT technology helps you stay dry, comfortable and focused.
- Ribbed fabric is soft and slightly textured for a premium feel.
- Mesh chest stripe and back panel provides added breathability.
- Standard fit for a relaxed, easy feel.



Women's Academy Pro Drill Top

RRP £37.95

Lifecycle

January 2020 - December 2021

Available in

XS - S - M - L - XL



BV6930-011
Black /
Anthracite /
Black / (White)



BV6930-398
Green Strike /
Anthracite /
Green Strike /
(White)



BV6930-406
Photo Blue /
Anthracite /
Photo Blue /
(White)



BV6930-635
Bright Crimson /
Anthracite /
Bright Crimson /
(White)

Product Features

- 100% Polyester.
- Dri-FIT technology helps you stay dry, comfortable and focused.
- Stretchy, unbrushed fabric fits close to your arms and invisible thumb loops help hold your sleeves in place.
- The curved hem creates a comfortable, flattering fit made for speed.
- Body fabric has a lightly brushed interior to help keep your core warm.
- The 1/4-length zipper lets you adjust your ventilation.



Women's Academy Pro Knit Track Jacket

RRP £42.95

Lifecycle

January 2020 - December 2021

Available in

XS - S - M - L - XL



BV6932-010
Anthracite /
Black / (White)



BV6932-060
Anthracite /
Photo Blue /
(White)



BV6932-061
Anthracite /
Green Strike /
(White)



BV6932-068
Anthracite /
Bright Crimson /
(White)

Product Features

- 100% Polyester.
- Dri-FIT technology helps you stay dry, comfortable and focused.
- Mesh panels across the chest provide added breathability.
- Zippered side pockets securely store small items.
- Standard fit for a relaxed, easy feel.



Women's Academy Pro Knit Short

RRP £19.95

Lifecycle

January 2020 - December 2021

Available in

XS - S - M - L - XL



BV6938-010
Anthracite /
Black / (White)



BV6938-062
Anthracite /
Photo Blue /
(White)



BV6938-064
Anthracite /
Green Strike /
(White)



BV6938-068
Anthracite /
Bright Crimson /
(White)

Product Features

- This product is made with at least 50% recycled polyester fibers.
- Dri-FIT technology helps keep you dry and comfortable.
- Elastic waistband with drawcord feels snug and comfortable.
- Standard fit for a relaxed, easy feel.
- Side pockets.



Women's Academy Pro Knit Pant

RRP £34.95

Lifecycle

January 2020 - December 2021

Available in

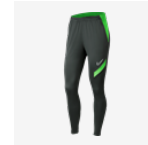
XS - S - M - L - XL



BV6934-010
Anthracite /
Black / (White)



BV6934-060
Anthracite /
Photo Blue /
(White)



BV6934-062
Anthracite /
Green Strike /
(White)



BV6934-067
Anthracite /
Bright Crimson /
(White)

Product Features

- This product is made with at least 75% recycled polyester fibers.
- Dri-FIT technology helps you stay dry, comfortable and focused.
- Flexible fabric stretches with you as you move so you're quickest to every ball.
- Zippered hems let you change easily over boots or shoes.
- Standard fit for a relaxed, easy feel.
- Zippered side pockets.



Sustainable materials



Park 20 Top

RRP £12.95

Lifecycle

January 2020 - December 2023

Available in

S - M - L - XL - 2XL



BV6883-010
Black / White /
(White)



BV6883-100
White / Black /
(Black)



BV6883-302
Pine Green /
White / (White)



BV6883-410
Obsidian / White
/ (White)



BV6883-463
Royal Blue /
White / (White)



BV6883-657
University Red /
White / (White)



BV6883-719
Tour Yellow /
Black / (Black)

Product Features

- This product is made with 100% recycled polyester fibers.
- Dri-FIT technology helps you stay dry, comfortable and focused.
- Slim fit for a tailored feel.
- Shoulder piping inspires a classic football look.



Sustainable materials



 Sustainable materials

Park 20 Top (Youth)

RRP £8.95

Lifecycle

January 2020 - December 2023

Available in

XS - S - M - L
XL

RRP £8.95
RRP £9.95



BV6905-010
Black / White /
(White)



BV6905-100
White / Black /
(Black)



BV6905-302
Pine Green /
White / (White)



BV6905-451
Obsidian / White
/ (White)



BV6905-463
Royal Blue /
White / (White)



BV6905-657
University Red /
White / (White)



BV6905-719
Tour Yellow /
Black / (Black)

Product Features

- This product is made with 100% recycled polyester fibers.
- Dri-FIT technology helps you stay dry, comfortable and focused.
- Slim fit for a tailored feel.
- Shoulder piping inspires a classic football look.



 Sustainable materials

Park 20 Polo

RRP £21.95

Lifecycle

January 2020 - December 2023

Available in

S - M - L - XL - 2XL



BV6879-010
Black / White /
(White)



BV6879-100
White / Black /
(Black)



BV6879-302
Pine Green /
White / (White)



BV6879-410
Obsidian / White
/ (White)



BV6879-463
Royal Blue /
White / (White)



BV6879-657
University Red /
White / (White)



BV6879-719
Tour Yellow /
Black / (Black)

Product Features

- This product is made with 100% recycled polyester fibers.
- Dri-FIT technology helps keep you dry and comfortable.
- Standard fit for a relaxed, easy feel.
- Fold-over collar with a two-button placket delivers timeless style.
- Shoulder piping inspires a classic football look.



 Sustainable materials

Park 20 Polo (Youth)

RRP £14.95

Lifecycle

January 2020 - December 2023

Available in

XS - S - M - L
XL

RRP £14.95
RRP £16.95



BV6903-010
Black / White /
(White)



BV6903-100
White / Black /
(Black)



BV6903-302
Pine Green /
White / (White)



BV6903-451
Obsidian / White
/ (White)



BV6903-463
Royal Blue /
White / (White)



BV6903-657
University Red /
White / (White)



BV6903-719
Tour Yellow /
Black / (Black)

Product Features

- This product is made with 100% recycled polyester fibers.
- Dri-FIT technology helps keep you dry and comfortable.
- Standard fit for a relaxed, easy feel.
- Fold-over collar with a two-button placket delivers timeless style.
- Shoulder piping inspires a classic football look.



Park 20 Crew Top

RRP £25.95

Lifecycle

January 2020 - December 2023

Available in

S - M - L - XL - 2XL



BV6875-010
Black / White /
(White)



BV6875-100
White / Black /
(Black)



BV6875-302
Pine Green /
White / (White)



BV6875-410
Obsidian / White
/ (White)



BV6875-463
Royal Blue /
White / (White)



BV6875-657
University Red /
White / (White)



BV6875-719
Tour Yellow /
Black / (Black)

Product Features

- 100% Polyester.
- Dri-FIT technology helps you stay dry, comfortable and focused.
- Standard fit for a relaxed, easy feel.
- Shoulder piping inspires a classic football look.



Park 20 Crew Top (Youth)

RRP £18.95

Lifecycle

January 2020 - December 2023

Available in

XS - S - M - L
XL

RRP £18.95

RRP £21.95



BV6901-010
Black / White /
(White)



BV6901-100
White / Black /
(Black)



BV6901-302
Pine Green /
White / (White)



BV6901-451
Obsidian / White
/ (White)



BV6901-463
Royal Blue /
White / (White)



BV6901-657
University Red /
White / (White)



BV6901-719
Tour Yellow /
Black / (Black)

Product Features

- 100% Polyester.
- Dri-FIT technology helps you stay dry, comfortable and focused.
- Standard fit for a relaxed, easy feel.
- Shoulder piping inspires a classic football look.



 Sustainable materials

Park 20 Rain Jacket

RRP £29.95

Lifecycle

January 2020 - December 2023

Available in

S - M - L - XL - 2XL



BV6881-010
Black / White /
(White)



BV6881-060
Anthracite /
Anthracite /
(White)



BV6881-302
Pine Green /
White / (White)



BV6881-410
Obsidian / White
/ (White)



BV6881-463
Royal Blue /
White / (White)



BV6881-657
University Red /
White / (White)



BV6881-719
Tour Yellow /
Black / (Black)

Product Features

- This product is made with at least 75% recycled polyester fibers.
- Dri-FIT technology and water-repellant fabric help you stay dry in light rain.
- Side pockets with mesh lining help keep belongings safe and dry.
- Shoulder piping inspires a classic football look.



 Sustainable materials

Park 20 Rain Jacket (Youth)

RRP £22.95

Lifecycle

January 2020 - December 2023

Available in

XS - S - M - L
XL

RRP £22.95
RRP £26.95



BV6904-010
Black / White /
(White)



BV6904-060
Anthracite /
Anthracite /
(White)



BV6904-302
Pine Green /
White / (White)



BV6904-451
Obsidian / White
/ (White)



BV6904-463
Royal Blue /
White / (White)



BV6904-657
University Red /
White / (White)



BV6904-719
Tour Yellow /
Black / (Black)

Product Features

- This product is made with 100% recycled polyester fibers.
- Dri-FIT technology and water-repellant fabric help you stay dry in light rain.
- Side pockets with mesh lining help keep belongings safe and dry.
- Shoulder piping inspires a classic football look.



Park 20 Knit Track Jacket

RRP £29.95

Lifecycle

January 2020 - December 2023

Available in

S - M - L - XL - 2XL



BV6885-010
Black / White /
(White)



BV6885-100
White / Black /
(Black)



BV6885-302
Pine Green /
White / (White)



BV6885-410
Obsidian / White
/ (White)



BV6885-463
Royal Blue /
White / (White)



BV6885-657
University Red /
White / (White)



BV6885-719
Tour Yellow /
Black / (Black)

Product Features

- 100% Polyester.
- Dri-FIT technology helps you stay dry and comfortable.
- Knit fabric feels soft and comfortable.
- Standard fit for a relaxed, easy feel.
- Side pockets with mesh lining help keep your belongings safe and dry.



Park 20 Knit Track Jacket (Youth)

RRP £21.95

Lifecycle

January 2020 - December 2023

Available in

XS - S - M - L
XL

RRP £21.95
RRP £25.95



BV6906-010
Black / White /
(White)



BV6906-100
White / Black /
(Black)



BV6906-302
Pine Green /
White / (White)



BV6906-451
Obsidian / White
/ (White)



BV6906-463
Royal Blue /
White / (White)



BV6906-657
University Red /
White / (White)



BV6906-719
Tour Yellow /
Black / (Black)

Product Features

- 100% Polyester.
- Dri-FIT technology helps you stay dry and comfortable.
- Knit fabric feels soft and comfortable.
- Standard fit for a relaxed, easy feel.
- Side pockets with mesh lining help keep your belongings safe and dry.



Sustainable materials



Park 20 Knit Short

RRP £22.95

Lifecycle

January 2021 - December 2023

Available in

S - M - L - XL - 2XL



CW6152-010
Black / Black /
(White)



CW6152-451
Obsidian /
Obsidian /
(White)

Product Features

- This product is made with 100% recycled polyester fibers.
- Dri-FIT technology helps keep you dry and comfortable.
- Zippered side pockets let you secure your essentials.
- Elastic waistband stretches for a secure fit.
- Standard fit for a relaxed, easy feel.



 Sustainable materials

NEW Park 20 Knit Short (Youth)

Lifecycle
January 2021 - December 2023

Available in
XS - S - M - L
XL

RRP £14.95

RRP £14.95
RRP £16.95



DB8244-010
Black / Black /
(White)



DB8244-451
Obsidian /
Obsidian /
(White)

- Product Features**
- This product is made with 100% recycled polyester fibers.
 - Dri-FIT technology helps keep you dry and comfortable.
 - Zippered side pockets let you secure your essentials.
 - Elastic waistband stretches for a secure fit.
 - Standard fit for a relaxed, easy feel.



Park 20 Knit Pant

RRP £26.95

Lifecycle

January 2020 - December 2023

Available in

S - M - L - XL - 2XL



BV6877-010
Black / Black /
(White)



BV6877-410
Obsidian /
Obsidian /
(White)

Product Features

- 100% Polyester.
- Dri-FIT technology helps keep you dry and comfortable.
- Panels on the calves make it easy to change with boots.
- Side pockets hold your belongings.
- Standard fit for a relaxed, easy feel.
- Elastic waistband and drawcord.



Park 20 Knit Pant (Youth)

RRP £18.95

Lifecycle

January 2020 - December 2023

Available in

XS - S - M - L
XL

RRP £18.95

RRP £21.95



BV6902-010
Black / Black /
(White)



BV6902-451
Obsidian /
Obsidian /
(White)

Product Features

- 100% Polyester.
- Dri-FIT technology helps keep you dry and comfortable.
- Panels on the calves make it easy to change with boots.
- Side pockets hold you belongings.
- Standard fit for a relaxed, easy feel.
- Elastic waistband and drawcord.



NEW Team Park 20 Fall Jacket

RRP £79.95

Lifecycle

January 2021 - December 2023

Available in

S - M - L - XL - 2XL



CW6157-010
Black / (White)



CW6157-451
Obsidian /
(White)

Product Features

- 100% Polyester.
- Water-repellent fabric helps keep you dry when the elements turn.
- Elongated zipper hits above your chin for extra coverage.
- Elastic cuffs and hem help keep the jacket in place as you move.
- Snap pockets let you secure your essentials.
- Standard fit for a relaxed, easy feel.
- Full zipper.



NEW Team Park 20 Fall Jacket
(Youth)

RRP £59.95

Lifecycle

January 2021 - December 2023

Available in

XS - S - M - L
XL

RRP £59.95

RRP £71.95



CW6159-010
Black / (White)



CW6159-451
Obsidian /
(White)

Product Features

- 100% Polyester.
- Water-repellent fabric helps keep you dry when the elements turn.
- Elongated zipper hits above your chin for extra coverage.
- Elastic cuffs and hem help keep the jacket in place as you move.
- Snap pockets let you secure your essentials.
- Loose fit for a roomy feel.
- Full zipper.



NEW Team Park 20 Winter Jacket

RRP £104.95

Lifecycle

January 2021 - December 2023

Available in

S - M - L - XL - 2XL



CW6156-010
Black / (White)



CW6156-451
Obsidian /
(White)

Product Features

- 100% Polyester.
- Water-repellent finish helps keep you dry when it starts to rain.
- Synthetic fill provides lightweight warmth.
- Elongated, full-zip design covers you from the elements.
- Loose fit for a roomy feel.
- Snap-button pockets.



NEW Team Park 20 Winter Jacket
(Youth)

RRP £79.50

Lifecycle

January 2021 - December 2023

Available in

XS - S - M - L
XL

RRP £79.50

RRP £94.95



CW6158-010
Black / (White)



CW6158-451
Obsidian /
(White)

Product Features

- 100% Polyester.
- Water-repellent finish helps keep you dry when it starts to rain.
- Synthetic fill provides lightweight warmth.
- Elongated, full-zip design covers you from the elements.
- Loose fit for a roomy feel.
- Snap-button pockets.



Sustainable materials



Women's Park 20 Knit Short

RRP £22.95

Lifecycle

January 2021 - December 2023

Available in

XS - S - M - L - XL



CW6154-010
Black / Black /
(White)



CW6154-451
Obsidian /
Obsidian /
(White)

Product Features

- This product is made with 100% recycled polyester fibers.
- Dri-FIT technology helps keep you dry and comfortable.
- Elastic waistband and hidden drawcord give you a secure fit.
- Zippered pockets secure your everyday essentials.
- Standard fit for a relaxed, easy feel.



Women's Park 20 Fall Jacket

RRP £79.95

Lifecycle

January 2021 - December 2023

Available in

XS - S - M - L - XL



DC8039-010
Black / (White)



DC8039-451
Obsidian /
(White)

Product Features

- 100% Polyester.
- Thermal fabric helps keep you warm.
- Water-repellent treatment helps keep you dry in light rain.
- Elastic cuffs and hem hold the jacket in place as you move.
- Snap pockets secure your everyday essentials.
- Standard fit for a relaxed, easy feel.



NEW Women's Park 20 Winter Jacket

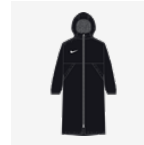
RRP £104.95

Lifecycle

January 2021 - December 2023

Available in

XS - S - M - L - XL



DC8036-010
Black / (White)



DC8036-451
Obsidian /
(White)

Product Features

- 100% Polyester.
- Water-repellent finish helps you stay dry in light rain.
- Synthetic-fill insulation provides warmth without weighing you down.
- French terry lining at the hood, pockets and collar feels soft and warm.
- Loose fit and longer length cover you from the elements.
- Loose fit for a roomy feel.
- Full-length zipper.
- Snap pockets.



Nike Squad Crew Socks

RRP £8.95

Lifecycle

January 2020 - December 2021

Available in

S - M - L - XL



SK0030-010
Black / (White)



SK0030-100
White / (Black)



SK0030-410
Midnight Navy /
(White)



SK0030-463
Royal Blue /
(White)



SK0030-657
University Red /
(White)

Product Features

- 88% Polyester/9% Cotton/3% Spandex.
- Sweat-wicking fabric helps keep feet dry and comfortable.
- Cushioning in high-wear areas adds durability.



NEW Training Bib

RRP £21.95

Lifecycle

January 2021 - December 2023

Available in

S - L



CW3845-100
White / (Black)



CW3845-313
Action Green /
(Black)



CW3845-406
Photo Blue /
(Black)



CW3845-616
Vivid Pink /
(Black)



CW3845-702
Volt / (Black)

Product Features

- 100% Polyester.
- Dri-FIT technology helps keep you dry and comfortable.
- Mesh fabric feels lightweight and breathable.
- Standard fit for a relaxed, easy feel.
- Available in a pack of 3 only.



Team Football Beanie

RRP £16.95

Lifecycle

January 2019 - December 2021

Available in

ONE SIZE



AV9751-010
Black / (White)



AV9751-060
Anthracite /
(White)



AV9751-451
Obsidian /
(White)

Product Features

- Body: 62% Cotton/38% Polyester. Cuff: 100% Acrylic.
- Dri-FIT technology helps you stay dry and comfortable.
- Soft, stretchy fabric feels warm and comfortable.



Hyper Warm Academy Football Gloves

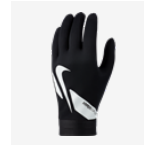
RRP £22.95

Lifecycle

October 2020 - December 2022

Available in

S - M - L - XL



CU1589-010
Black / Black /
(White)

Product Features

- 62% Polyester/28% Nylon/5% Rubber/5% Spandex.
- Nike Pro HyperWarm technology helps keep hands warm without overheating.
- Silicone on the fingers and palms helps you grip the ball.
- Forefinger and thumb tips are touch-screen friendly so you can access your phone.
- Flexible cuffs stretch for a secure fit.



Hyper Warm Academy Football Gloves (Youth)

RRP £16.95

Lifecycle

October 2020 - December 2022

Available in

S - M - L



CU1595-011
Black / Black /
(White)

Product Features

- 62% Polyester/28% Nylon/5% Rubber/5% Spandex.
- Nike Pro HyperWarm technology helps keep hands warm without overheating.
- Silicone on the fingers and palms helps you grip the ball.
- Touch-screen friendly tips on the forefinger and thumb let you access your phone.
- Flexible cuffs stretch for a secure fit.



Academy 18 Football Rain Jacket

RRP £47.95

Lifecycle

January 2018 - December 2022

Futures only

Available in

XS - S - M - L - XL - 2XL



893796-010
Black / Black /
(White)



893796-451
Obsidian /
Obsidian /
(White)

Product Features

- 100% Polyester.
- Nike Repel fabric resists light rain and wind.
- Structured hood packs away into the collar when you don't need it.
- Hem is longer in the back to help keep you covered as you move.
- Hook-and-loop closures at the sleeve cuffs let you adjust the fit.
- Full-length zipper.
- Drawcord hem.
- Zippered pockets.



Academy 18 Football Rain Jacket (Youth)

RRP £31.95

Lifecycle

January 2018 - December 2022

Futures only

Available in

XS - S - M - L
XL

RRP £31.95

RRP £37.95



893819-010
Black / Black /
(White)



893819-451
Obsidian /
Obsidian /
(White)

Product Features

- 100% Polyester.
- Nike Repel fabric resists light rain and wind.
- Structured hood packs away into the collar when you don't need it.
- Hem is longer in the back to help keep you covered as you move.
- Hook-and-loop closures at the sleeve cuffs let you adjust the fit.
- Full-length zipper.
- Drawcord hem.
- Zippered pockets.



LIFESTYLE



NEW Team Club 20 Tee

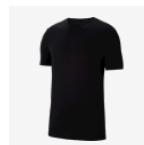
RRP £17.95

Lifecycle

January 2021 - December 2023

Available in

S - M - L - XL - 2XL - 3XL



CZ0881-010
Black / (White)



CZ0881-071
Charcoal
Heather / (White)



CZ0881-100
White / (Black)



CZ0881-302
Pine Green /
(White)



CZ0881-451
Obsidian /
(White)



CZ0881-463
Royal Blue /
(White)



CZ0881-657
University Red /
(White)



CZ0881-719
Tour Yellow /
(Black)

Product Features

- 100% Cotton.
- Standard fit for a relaxed, easy feel.
- Ribbed collar.



NEW Team Club 20 Tee (Youth)

RRP £10.95

Lifecycle

January 2021 - December 2023

Available in

XS - S - M - L
XL

RRP £10.95

RRP £12.95



CZ0909-010
Black / (White)



CZ0909-071
Charcoal
Heather / (White)



CZ0909-100
White / (Black)



CZ0909-302
Pine Green /
(White)



CZ0909-451
Obsidian /
(White)



CZ0909-463
Royal Blue /
(White)



CZ0909-657
University Red /
(White)



CZ0909-719
Tour Yellow /
(Black)

Product Features

- 100% Cotton.
- Standard fit for a relaxed, easy feel.
- Ribbed collar.



NEW Team Club 20 Tee

RRP £24.95

Lifecycle

January 2021 - December 2023

Available in

S - M - L - XL - 2XL - 3XL



CW6936-010
Black / (White)



CW6936-100
White / (Black)



CW6936-451
Obsidian /
(White)



CW6936-657
University Red /
(White)

Product Features

- 75% Polyester/13% Cotton/12% Rayon.
- The Nike Dri-FIT Park T-Shirt is made of soft, sweat-wicking fabric to help keep you comfortable during training or competition.
- Nike Dri-FIT technology helps you stay dry and comfortable.
- Lightweight fabric feels soft and slightly stretchy.
- Standard fit for a relaxed, easy feel.



NEW Team Club 20 Tee (Youth)

RRP £16.95

Lifecycle

January 2021 - December 2023

Available in

XS - S - M - L
XL

RRP £16.95

RRP £19.95



CW6941-010
Black / (White)



CW6941-100
White / (Black)



CW6941-451
Obsidian /
(White)



CW6941-657
University Red /
(White)

Product Features

- 57% Cotton/43% Polyester.
- The Nike Dri-FIT Park T-Shirt is made of soft, sweat-wicking fabric to help keep you comfortable during training or competition.
- Nike Dri-FIT technology helps you stay dry and comfortable.
- Lightweight fabric feels soft and slightly stretchy.
- Standard fit for a relaxed, easy feel.
- Ribbed collar.



NEW Park 20 Tee

RRP £19.95

Lifecycle

January 2021 - December 2023

Available in

S - M - L - XL - 2XL - 3XL



CW6952-010
Black / (White)



CW6952-071
Charcoal
Heather / (White)



CW6952-100
White / (Black)

Product Features

- 57% Cotton/43% Polyester.
- The Nike Dri-FIT Park T-Shirt is made of soft, sweat-wicking fabric to help keep you comfortable during training or competition.
- Nike Dri-FIT technology helps you stay dry and comfortable.
- Lightweight fabric feels soft and slightly stretchy.
- Standard fit for a relaxed, easy feel.
- Ribbed collar.



NEW Team Club 20 Crewneck

RRP £32.95

Lifecycle

January 2021 - December 2023

Available in

S - M - L - XL - 2XL - 3XL



CW6902-010
Black / (White)



CW6902-063
Dark Grey
Heather / (Black)



CW6902-071
Charcoal
Heather / (White)



CW6902-451
Obsidian /
(White)

Product Features

- 82% Cotton/18% Polyester.
- Fleece fabric feels soft and warm.
- Ribbed cuffs and hem help keep the top in place as you move.
- Standard fit for a relaxed, easy feel.



NEW Team Club 20 Crewneck
(Youth)

RRP £23.95

Lifecycle

January 2021 - December 2023

Available in

XS - S - M - L
XL

RRP £23.95

RRP £27.95



CW6904-010
Black / (White)



CW6904-071
Charcoal
Heather / (White)



CW6904-451
Obsidian /
(White)

Product Features

- 82% Cotton/18% Polyester.
- Fleece fabric feels soft and warm.
- Ribbed cuffs and hem help keep the top in place as you move.
- Standard fit for a relaxed, easy feel.



NEW Team Club 20 Hoodie

RRP £39.95

Lifecycle

January 2021 - December 2023

Available in

S - M - L - XL - 2XL - 3XL



CW6894-010
Black / White /
(White)



CW6894-071
Charcoal
Heather / White /
(White)



CW6894-101
White / White /
(Wolf Grey)



CW6894-302
Pine Green /
White / (White)



CW6894-451
Obsidian / White
/ (White)



CW6894-463
Royal Blue /
White / (White)



CW6894-657
University Red /
White / (White)



CW6894-719
Tour Yellow /
Black / (Black)

Product Features

- Body: 82% Cotton/18% Polyester. Hood lining: 100% Cotton.
- Fleece fabric feels soft and warm.
- Drawcord hood lets you adjust your coverage.
- Standard fit for a relaxed, easy feel.
- Front pocket.



NEW Team Club 20 Hoodie
(Youth)

RRP £25.95

Lifecycle
January 2021 - December 2023

Available in
XS - S - M - L
XL
RRP £25.95
RRP £29.95



CW6896-010
Black / (White)



CW6896-071
Charcoal
Heather / (White)



CW6896-101
White / (Wolf
Grey)



CW6896-302
Pine Green /
(White)



CW6896-451
Obsidian /
(White)



CW6896-463
Royal Blue /
(White)



CW6896-657
University Red /
(White)



CW6896-719
Tour Yellow /
(Black)

- Product Features**
- Body: 82% Cotton/18% Polyester. Hood lining: 100% Cotton.
 - Fleece fabric feels soft and warm.
 - Ribbed cuffs and hem help hold the hoodie in place.
 - Standard fit for a relaxed, easy feel.
 - Front pocket.



NEW Team Club 20 Full-Zip-Hoodie

RRP £42.95

Lifecycle

January 2021 - December 2023

Available in

S - M - L - XL - 2XL - 3XL



CW6887-010
Black / White /
(White)



CW6887-063
Dark Grey
Heather / Black /
(Black)



CW6887-071
Charcoal
Heather / White /
(White)



CW6887-451
Obsidian / White
/ (White)



CW6887-657
University Red /
White / (White)

Product Features

- Body: 82% Cotton/18% Polyester. Hood lining: 100% Cotton.
- Fleece fabric feels soft and warm.
- Drawcord lets you wear the hood loose or cinch out the cold.
- Standard fit for a relaxed, easy feel.
- Full-length zipper.
- Side Pockets.



NEW Team Club 20
Full-Zip-Hoodie (Youth)

RRP £30.95

Lifecycle

January 2021 - December 2023

Available in

XS - S - M - L
XL

RRP £30.95

RRP £35.95



CW6891-010
Black / (White)



CW6891-063
Dark Grey
Heather / (Black)



CW6891-071
Charcoal
Heather / (White)



CW6891-451
Obsidian /
(White)



CW6891-657
University Red /
(White)

Product Features

- Body: 82% Cotton/18% Polyester. Hood lining: 100% Cotton.
- Fleece fabric feels soft and warm.
- Ribbed cuffs and hem help hold the hoodie in place.
- Standard fit for a relaxed, easy feel.
- Side pockets.



NEW Team Club 20 Short

RRP £29.95

Lifecycle

January 2021 - December 2023

Available in

S - M - L - XL - 2XL



CW6910-010
Black / White /
(White)



CW6910-063
Dark Grey
Heather / Black /
(Black)



CW6910-071
Charcoal
Heather / White /
(White)



CW6910-451
Obsidian / White
/ (White)

Product Features

- Body: 82% Cotton/18% Polyester. Pocket bags: 100% Polyester.
- Fleece fabric feels soft and warm.
- Drawcord waistband lets you adjust the fit.
- Zippered pockets secure your everyday essentials.
- Loose fit for a roomy feel.



NEW Team Club 20 Short (Youth)

RRP £21.50

Lifecycle

January 2021 - December 2023

Available in

XS - S - M - L
XL

RRP £21.50

RRP £24.95



CW6932-010
Black / White /
(White)



CW6932-063
Dark Grey
Heather / Black /
(Black)



CW6932-071
Charcoal
Heather / White /
(White)



CW6932-451
Obsidian / White
/ (White)

Product Features

- Body: 82% Cotton/18% Polyester. Pocket bags: 100% Polyester.
- Fleece fabric feels soft and warm.
- Drawcord waistband lets you adjust the fit.
- Zippered pockets secure your everyday essentials.
- Standard fit for a relaxed, easy feel.



NEW Team Club 20 Pant

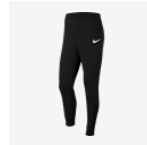
RRP £37.95

Lifecycle

January 2021 - December 2023

Available in

S - M - L - XL - 2XL



CW6907-010
Black / White /
(White)



CW6907-063
Dark Grey
Heather / Black /
(Black)



CW6907-071
Charcoal
Heather / White /
(White)



CW6907-451
Obsidian / White
/ (White)

Product Features

- Body: 82% Cotton/18% Polyester. Pocket bags: 100% Polyester.
- Standard fit for a relaxed, easy feel.
- Elastic waistband.
- Zippered pockets.
- Cuffed ankles.



NEW Team Club 20 Pant (Youth)

RRP £29.95

Lifecycle

January 2021 - December 2023

Available in

XS - S - M - L
XL

RRP £29.95

RRP £34.95



CW6909-010
Black / White /
(White)



CW6909-063
Dark Grey
Heather / Black /
(Black)



CW6909-071
Charcoal
Heather / White /
(White)



CW6909-451
Obsidian / White
/ (White)

Product Features

- Body: 82% Cotton/18% Polyester. Pocket bags: 100% Polyester.
- Fleece fabric feels soft and warm.
- Drawcord waistband lets you adjust the fit.
- Zippered pockets secure your everyday essentials.
- Standard fit for a relaxed, easy feel.



Women's Team Club 20 Tee

RRP £17.95

Lifecycle

January 2021 - December 2023

Available in

XS - S - M - L - XL



CZ0903-010
Black / (White)



CZ0903-071
Charcoal
Heather / (White)



CZ0903-100
White / (Black)



CZ0903-302
Pine Green /
(White)



CZ0903-451
Obsidian /
(White)



CZ0903-463
Royal Blue /
(White)



CZ0903-657
University Red /
(White)



CZ0903-719
Tour Yellow /
(Black)

Product Features

- 100% Cotton.
- Standard fit for a relaxed, easy feel.
- Ribbed collar.



NEW Women's Team Club 20 Tee

RRP £24.95

Lifecycle

January 2021 - December 2023

Available in

XS - S - M - L - XL



CW6967-010
Black / (White)



CW6967-100
White / (Black)



CW6967-451
Obsidian /
(White)



CW6967-657
University Red /
(White)

Product Features

- 75% Polyester/13% Cotton/12% Rayon.
- Dri-FIT technology helps you stay dry and comfortable.
- Lightweight fabric feels soft and slightly stretchy.
- Standard fit for a relaxed, easy feel.



NEW Women's Team Club 20 Hoodie

RRP £39.95

Lifecycle

January 2021 - December 2023

Available in

XS - S - M - L - XL



CW6957-010
Black / White /
(White)



CW6957-071
Charcoal
Heather / White /
(White)



CW6957-101
White / White /
(Wolf Grey)



CW6957-302
Pine Green /
White / (White)



CW6957-451
Obsidian / White
/ (White)



CW6957-463
Royal Blue /
White / (White)



CW6957-657
University Red /
White / (White)



CW6957-719
Tour Yellow /
Black / (Black)

Product Features

- Body: 80% Cotton/20% Polyester. Hood lining: 100% Cotton.
- Fleece fabric feels soft and warm.
- Ribbed cuffs and hem help hold the hoodie in place.
- Drawcord hood lets you adjust the fit.
- Standard fit for a relaxed, easy feel.
- Raglan sleeves.
- Front pocket.



NEW Women's Team Club 20 Full-Zip Hoodie

RRP £42.95

Lifecycle

January 2021 - December 2023

Available in

XS - S - M - L - XL



CW6955-010
Black / White /
(White)



CW6955-063
Dark Grey
Heather / Black /
(Black)



CW6955-071
Charcoal
Heather / White /
(White)



CW6955-451
Obsidian / White
/ (White)



CW6955-657
University Red /
White / (White)

Product Features

- Body: 80% Cotton/20% Polyester. Hood lining: 100% Cotton.
- Fleece fabric feels soft and warm.
- Large hood with drawcord lets you wear the hood loose or cinch out the cold.
- Standard fit for a relaxed, easy feel.
- Side pockets.



NEW Women's Team Club 20 Short

RRP £29.95

Lifecycle

January 2021 - December 2023

Available in

XS - S - M - L - XL



CW6963-010
Black / White /
(White)



CW6963-063
Dark Grey
Heather / Black /
(Black)



CW6963-071
Charcoal
Heather / White /
(White)



CW6963-451
Obsidian / White
/ (White)

Product Features

- Body: 82% Cotton/18% Polyester. Pocket bags: 100% Polyester.
- Fleece fabric feels soft and warm.
- Drawcord waistband lets you adjust the fit.
- Zippered pockets secure your everyday essentials.
- Loose fit for a roomy feel.



Women's Team Club 20 Pant

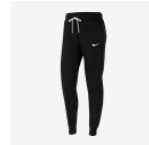
RRP £37.95

Lifecycle

January 2021 - December 2023

Available in

XS - S - M - L - XL



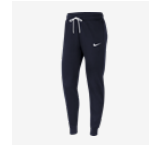
CW6961-010
Black / White /
(White)



CW6961-063
Dark Grey
Heather / Black /
(Black)



CW6961-071
Charcoal
Heather / White /
(White)



CW6961-451
Obsidian / White
/ (White)

Product Features

- Body: 80% Cotton/20% Polyester. Pocket bags: 100% Cotton.
- Fleece fabric feels soft and warm.
- Drawcord waistband lets you adjust the fit.
- Zippered pockets secure your everyday essentials.
- Standard fit for a relaxed, easy feel.



EQUIPMENT



NEW Club Elite Team Ball

RRP £54.95

Lifecycle

January 2021 - December 2022

Available in

5



CU8053-100
White / Black /
(Metallic Silver)

Product Features

- 40% Rubber/40% Synthetic Leather/15% Synthetic/5% Cotton.
- Nike Aerowsculpt technology uses molded grooves for more consistent flight.
- Textured casing gives you great touch and feel.
- Rubber bladder helps maintain air pressure and shape.
- 12-panel design.



NEW Academy Pro FIFA Size 4 Ball

RRP £31.95

Lifecycle

January 2021 - December 2022

Available in

4



CU8041-100
White / Black /
(Volt)



CU8041-101
White / Black /
(Total Orange)

Product Features

- 60% Rubber/15% Polyurethane/13% Polyester/12% EVA.
- Nike Aerowsculpt technology uses molded grooves for more consistent flight.
- Rubber bladder helps maintain air pressure and shape.
- High-contrast graphics help you easily track the ball.
- Size 4.



NEW Academy Pro FIFA Size 5 Ball

RRP £31.95

Lifecycle

January 2021 - December 2022

Available in

5



CU8038-100
White / Black /
(Volt)



CU8038-101
White / Black /
(Total Orange)

Product Features

- 60% Rubber/15% Polyurethane/13% Polyester/12% EVA.
- Nike Aerowsculpt technology uses molded grooves for more consistent flight.
- Rubber bladder helps maintain air pressure and shape.
- High-contrast graphics help you easily track the ball.
- Size 5.



NEW Futsal Pro Team Ball

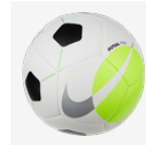
RRP £31.95

Lifecycle

January 2021 - December 2022

Available in

PRO



DH1992-100
White / Volt /
(Silver)

Product Features

- 60% Rubber/15% Polyurethane/13% Polyester/12% EVA.
- Textured surface gives you great touch and feel.
- Hand-sewn construction means tighter seams for durability.
- High-contrast graphics help you easily track the ball.
- Official Futsal size and weight.



NEW Strike Team 290g Ball

RRP £19.95

Lifecycle

January 2021 - December 2022

Available in

4 - 5



CU8062-100
White / Bright
Crimson / (Silver)

Product Features

- 60% Rubber/15% Polyurethane/13% Polyester/12% EVA.
- Reduced weight makes it more suitable for young athletes.
- Nike Aerowsculpt technology uses molded grooves for more consistent flight.
- High-contrast graphics help you easily track the ball.
- Machine-stitched casing enhances durability.
- Reinforced rubber bladder for optimal air and shape retention.
- 12-panel design.



NEW Strike Team 350g Ball

RRP £19.95

Lifecycle

January 2021 - December 2022

Available in

3 - 4 - 5



CU8064-100
White / Blue /
(Black)

Product Features

- 60% Rubber/15% Polyurethane/13% Polyester/12% EVA.
- Reduced weight makes it more suitable for young athletes.
- Nike Aerowsculpt technology uses molded grooves for more consistent flight.
- High-contrast graphics help you easily track the ball.
- Machine-stitched casing enhances durability.
- Reinforced rubber bladder for optimal air and shape retention.
- 12-panel design.



NEW Academy Team IMS Ball

RRP £19.95

Lifecycle

January 2021 - December 2022

Available in

3 - 4 - 5



CU8047-100
White / Black /
(Volt)



CU8047-101
White / Black /
(Total Orange)



CU8047-102
White / Black /
(Light Blue Fury)



CU8047-720
Yellow / Violet /
(Bright Crimson)

Product Features

- 60% Rubber/15% Polyurethane/13% Polyester/12% EVA.
- Nike Aerowsculpt technology uses molded grooves for more consistent flight.
- Textured casing gives you great touch and feel.
- Reinforced rubber bladder helps maintain air pressure and shape.



NEW Park Team Ball

RRP £15.95

Lifecycle

January 2021 - December 2023

Available in

3 - 4 - 5



CU8033-101
White / Black /
(Volt)



CU8033-310
Rage Green /
Black / (White)



CU8033-610
Crimson / Black
/ (White)



CU8033-720
Yellow / Violet /
(Bright Crimson)



CU8033-810
Orange / Black /
(White)

Product Features

- 60% Rubber/15% Polyurethane/13% Polyester/12% EVA.
- Smooth surface has a consistent touch.
- Durable design helps maintain air pressure and shape.
- 12-panel design.



NEW Pitch Team Ball

RRP £11.95

Lifecycle

January 2021 - December 2022

Available in

3 - 4 - 5



DH9796-100
White / (Black)



DH9796-310
Electric Green /
(Black)



DH9796-410
Blue Fury /
(Black)



DH9796-635
Bright Crimson /
(Black)

Product Features

- 60% Rubber/15% Polyurethane/13% Polyester/12% EVA.
- Smooth, durable casing has a consistent feel.
- Rubber bladder helps maintain air pressure and shape.



Nike Club Team Ball Bag

RRP £31.95

Lifecycle

January 2019 - December 2021

Available in

ONE SIZE



BA5200-010
Black / Black /
(White)

Product Features

- Lining: 100% Polyester. Body: 88% Polyester/12% Nylon.
- Adjustable shoulder straps are padded for comfortable carrying.
- Drawcord closure lets you quickly access your gear.
- Lightweight mesh promotes ventilation.
- 86L x 44H x 44W cm / 160L.



NEW Academy Team L Hardcase

RRP £39.95

Lifecycle

January 2021 - December 2022

Available in

L



CU8087-010
Black / Black /
(White)



CU8087-410
Midnight Navy /
Black / (White)



CU8087-657
University Red /
Black / (White)

Product Features

- 100% Polyester.
- Main body compartment offers spacious storage.
- Hard bottom helps keep items safe from bumps and scrapes.
- Zippered wet/dry compartment at the bottom keeps things clean and organized.
- Handles can attach together for an alternate carrying option.
- 64L x 31W x 30H cm/ 59L.



NEW Academy Team M Hardcase

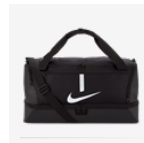
RRP £34.95

Lifecycle

January 2021 - December 2022

Available in

M



CU8096-010
Black / Black /
(White)



CU8096-410
Midnight Navy /
Black / (White)



CU8096-657
University Red /
Black / (White)

Product Features

- 100% Polyester.
- Main body compartment offers spacious storage.
- Hard bottom helps keep items safe from bumps and scrapes.
- Zippered wet/dry compartment at the bottom keeps gear clean and organized.
- Handles can attach together for an alternate carrying option.
- 53L x 30W x 27H cm/ 37L.



NEW Academy Team L Duffel Bag

RRP £31.95

Lifecycle

January 2021 - December 2022

Available in

L



CU8089-010
Black / Black /
(White)



CU8089-410
Midnight Navy /
Black / (White)



CU8089-657
University Red /
Black / (White)

Product Features

- 100% Polyester.
- Large main compartment is spacious enough for your ball and more.
- Zippered wet/dry compartment at the bottom helps keep things clean and organized.
- Hand and shoulder straps let you carry your gear comfortably.
- Small interior pocket and zippered exterior pockets hold small valuables.
- 70L x 36W x 35H cm / 95L.



Academy Team M Duffel Bag

RRP £26.95

Lifecycle

January 2021 - December 2022

Available in

M



CU8090-010
Black / Black /
(White)



CU8090-410
Midnight Navy /
Black / (White)



CU8090-657
University Red /
Black / (White)

Product Features

- 100% Polyester.
- Main compartment is spacious enough for your ball and more.
- Zippered wet/dry compartment at the bottom helps keep things clean and organized.
- Hand and shoulder straps let you carry your gear comfortably.
- Small interior pocket and zippered exterior pockets hold small valuables.
- 64L x 30W x 31H cm / 60L.



NEW Academy Team S Duffel Bag

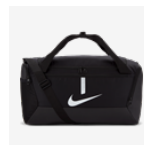
RRP £22.95

Lifecycle

January 2021 - December 2022

Available in

S



CU8097-010
Black / Black /
(White)



CU8097-410
Midnight Navy /
Black / (White)



CU8097-657
University Red /
Black / (White)

Product Features

- 100% Polyester.
- Zippered main compartment offers spacious storage.
- Separate wet/dry compartment helps keep things clean and organized.
- Hand and shoulder straps let you carry your gear comfortably.
- Small interior pocket and zippered exterior pockets hold small valuables.
- 53L x 26W x 28H cm / 41L.



NEW Academy Team Backpack

RRP £26.95

Lifecycle

January 2021 - December 2022

Available in

ONE SIZE



DC2647-010
Black / Black /
(White)



DC2647-411
Midnight Navy /
Black / (White)



DC2647-657
University Red /
Black / (White)

Product Features

- 100% Polyester.
- Wet/dry compartment helps keep things clean and organized.
- Curved shoulder straps and back panel are padded for extra comfort.
- Back pocket features a felt interior to safely store your phone or keys.
- Mesh pocket on the side is designed to hold a water bottle.
- Dual-zippered main compartment holds all your gear.
- Front pocket is large enough to fit a soccer ball.
- 48H x 33W x 17D cm/ 30L.



NEW Academy Team Backpack (Youth)

RRP £22.95

Lifecycle

January 2021 - December 2022

Available in

ONE SIZE



DA2571-010
Black / Black /
(White)

Product Features

- 100% Polyester.
- Wet/dry compartment helps keep things clean and organized.
- Curved shoulder straps and back panel are padded for extra comfort.
- Back pocket features a felt interior to safely store your phone or keys.
- Mesh pocket on the side is designed to hold a water bottle.
- Front pocket is large enough to fit a soccer ball.
- Internal sleeve safely stores up to a 15" laptop.
- 45H x 30W x 13D cm/ 22L.



NEW Academy Football Gymsack

RRP £10.95

Lifecycle

January 2021 - December 2022

Available in

ONE SIZE



DA5435-010
Black / Black /
(White)

Product Features

- 100% Polyester.
- Woven fabric is lightweight and durable.
- Main compartment cinches closed for easy access to your gear.
- Mesh at the bottom allows ventilation.
- Zippered pouch on the front keeps your essentials within reach.
- 50H x 36W x 6D cm / 18L.



Nike Club Team Roller Bag

RRP £84.95

Lifecycle

January 2019 - December 2021

Available in

ONE SIZE



BA5199-010
Black / Black /
(White)

Product Features

- 100% Polyester.
- Adjustable handle and wheels for easier hauling.
- Zippered main compartment provides secure storage.
- Grab handle on the side gives an alternative carrying option.
- 82L x 35W x 38H cm /120L.



Nike Club Team Toiletry Bag

RRP £12.95

Lifecycle

January 2019 - December 2021

Available in

ONE SIZE



BA5198-010
Black / Black /
(White)

Product Features

- 100% Polyester.
- Zippered closure for secure storage.
- Tarpaulin bottom helps keep items dry.
- Haul loop for convenient carrying.
- 26L x 14H x 14W cm / 8L.



niketeamfootball.com